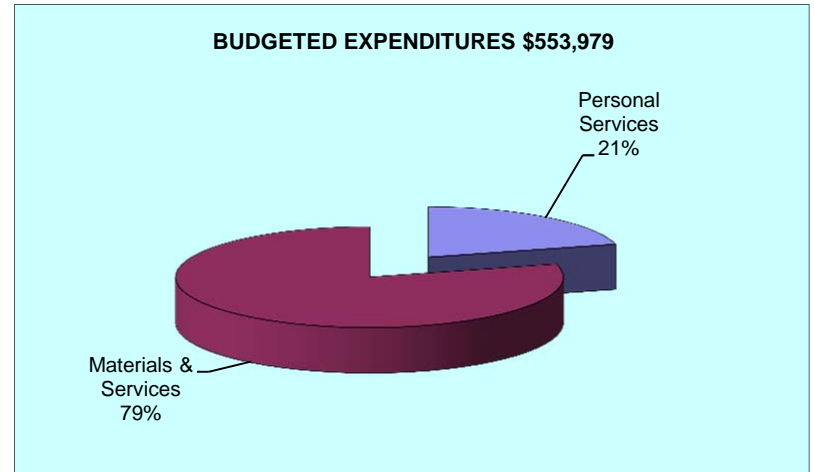
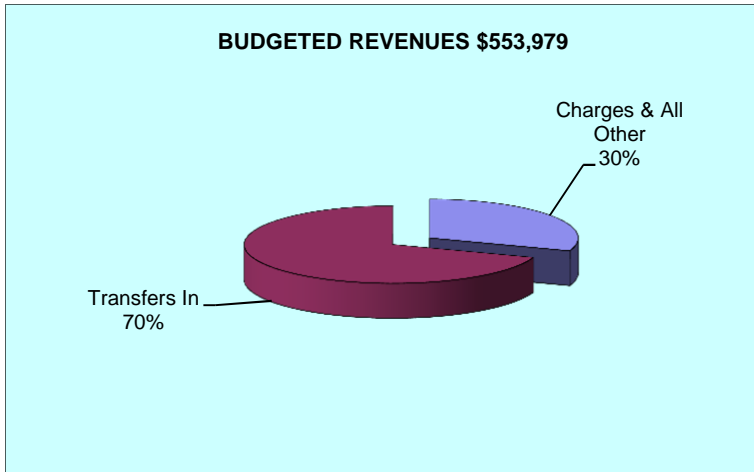
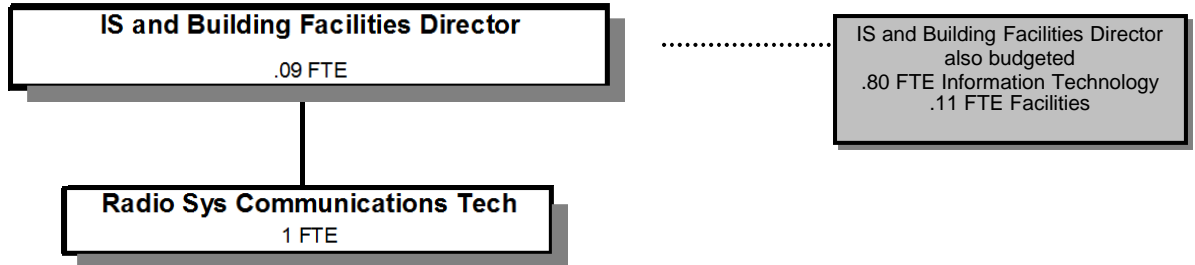


# Radio System



Douglas County, Oregon  
Public Safety Fund  
Radio System (1900)

	Actual FY 11-12	Actual FY 12-13	Actual FY 13-14	Revised Budget FY 14-15	Proposed FY 15-16	Approved FY 15-16	Adopted FY 15-16
<b><u>RESOURCES</u></b>							
Beginning Balance		21,200	25,133				
Revenues:							
Charges and Other Revenues	122,748	116,423	132,414	150,000	168,516	168,516	168,516
Transfers In - General Fund	67,835						
Transfers In - Public Works	348,576	340,000	327,940	396,804	385,463	385,463	385,463
Total Revenue	539,159	456,423	460,354	546,804	553,979	553,979	553,979
<b>TOTAL RESOURCES</b>	539,159	477,623	485,487	546,804	553,979	553,979	553,979
<b><u>REQUIREMENTS</u></b>							
Personnel Services	63,147	113,169	121,341	127,804	115,433	115,433	115,433
Materials & Services	445,817	272,688	300,624	419,000	438,546	438,546	438,546
Capital Outlay	8,995	66,633					
Total Expenditures	517,959	452,490	421,965	546,804	553,979	553,979	553,979
Ending Balance	21,200	25,133	63,523				
<b>TOTAL REQUIREMENTS</b>	539,159	477,623	485,488	546,804	553,979	553,979	553,979
<b>Staffing FTE</b>	<b>1.00</b>	<b>1.19</b>	<b>1.19</b>	<b>1.19</b>	<b>1.09</b>	<b>1.09</b>	<b>1.09</b>

Douglas County, Oregon  
Public Safety Fund  
Radio System

Department Detail

			Actual	Actual	Revised	Proposed	Approved	Adopted
			FY 12-13	FY 13-14	Budget	FY 15-16	FY 15-16	FY 15-16
					FY 14-15			
220-1900-3030-00	Restitution	General	300	0	0	0	0	0
220-1900-3800-01	Interest	General Investments	106	29	0	0	0	0
220-1900-3820-50	Rents, Leases and Royalties	Radio Facility	106,629	132,385	150,000	168,516	168,516	168,516
220-1900-3879-00	Miscellaneous	General	90	0	0	0	0	0
220-1900-3879-90	Miscellaneous	Subrogating Claim Recovery	9,298	0	0	0	0	0
220-1900-3900-11	Transfers In	Public Works	340,000	327,940	396,804	385,463	385,463	385,463
<b>Total Revenue</b>			<b>456,123</b>	<b>460,354</b>	<b>546,804</b>	<b>553,979</b>	<b>553,979</b>	<b>553,979</b>
220-1900-4000-00	Regular Employees	General	72,991	76,757	80,339	73,254	73,254	73,254
220-1900-4050-00	Overtime	General	0	280	0	0	0	0
220-1900-4500-00	PERS	General	18,376	20,532	21,425	18,245	18,245	18,245
220-1900-4510-00	Social Security	General	5,332	5,653	6,146	5,604	5,604	5,604
220-1900-4520-00	Workers' Compensation	General	255	270	281	256	256	256
220-1900-4530-00	Medical and Dental Insurance	General	14,958	17,471	19,492	17,854	17,854	17,854
220-1900-4540-00	Unemployment	General	1,257	378	121	220	220	220
<b>Total Personnel Services</b>			<b>113,169</b>	<b>121,341</b>	<b>127,804</b>	<b>115,433</b>	<b>115,433</b>	<b>115,433</b>
220-1900-5099-00	Other Professional Services	General	6,096	22,309	15,000	15,000	15,000	15,000
220-1900-5199-10	Other Technical Services	Pacific Power Line Charge	31,630	26,317	35,000	37,000	37,000	37,000
220-1900-6065-00	Fuel and Oil	General	25,376	24,251	32,000	33,000	33,000	33,000
220-1900-6065-03	Fuel and Oil	Propane	100	100	500	500	500	500
220-1900-6295-00	Equipment-Noninventory	General	11,112	6,272	32,500	41,398	41,398	41,398
220-1900-6400-50	Land and Building Rent	Radio Facility Lease	150,131	153,007	180,201	188,303	188,303	188,303
220-1900-6500-00	Interdept Vehicle Expense	General	3,174	3,608	4,200	4,000	4,000	4,000
220-1900-6510-10	Equip/Vehicle Main & Repair	Comm System M&R	40,318	62,459	80,000	78,516	78,516	78,516
220-1900-6550-00	Building and Grounds Maint	General	0	0	35,000	35,000	35,000	35,000
220-1900-6680-10	Communication	Internet Service	0	0	0	1,560	1,560	1,560
220-1900-6680-13	Communication	Frequency Lease	0	1,591	1,545	1,545	1,545	1,545
220-1900-6720-01	Fire/Liability Insurance	Liability Ins Charges	0	0	150	120	120	120
220-1900-7410-00	Postage	General	357	386	500	404	404	404
220-1900-7550-00	Travel	General	819	0	0	0	0	0

Douglas County, Oregon  
Public Safety Fund  
Radio System

Department Detail

			Actual	Actual	Revised	Proposed	Approved	Adopted
			FY 12-13	FY 13-14	Budget	FY 15-16	FY 15-16	FY 15-16
					FY 14-15			
220-1900-7560-00	Conventions, Schools, Seminars	General	3,500	318	2,000	2,200	2,200	2,200
220-1900-7900-00	Miscellaneous	General	75	6	404	0	0	0
<b>Total Materials and Services</b>			<b>272,688</b>	<b>300,624</b>	<b>419,000</b>	<b>438,546</b>	<b>438,546</b>	<b>438,546</b>
220-1900-8200-00	Furniture and Equipment	General	64,589	0	0	0	0	0
220-1900-8200-99	Furniture and Equipment	NonInventory	2,044	0	0	0	0	0
<b>Total Capital Outlay</b>			<b>66,633</b>	<b>0</b>	<b>0</b>	<b>0</b>	<b>0</b>	<b>0</b>
<b>Total Expenditures</b>			<b>452,490</b>	<b>421,965</b>	<b>546,804</b>	<b>553,979</b>	<b>553,979</b>	<b>553,979</b>

Douglas County, Oregon  
 Public Safety Fund  
 Radio System

PERSONNEL SERVICES					
	Actual	Actual	Revised	Budget	
	FTE	FTE	FTE	FY 15-16	
	<u>FY 12-13</u>	<u>FY 13-14</u>	<u>FY 14-15</u>	<u>FTE</u>	<u>Amount</u>
IS and Building Facilities Director	0.09	0.09	0.09	0.09	13,149
IS Project Manager	0.10	0.10	0.10		
Radio Sys Communications Tech	<u>1.00</u>	<u>1.00</u>	<u>1.00</u>	<u>1.00</u>	<u>60,105</u>
Total Regular	<u>1.00</u>	<u>1.19</u>	<u>1.19</u>	<u>1.09</u>	<u>73,254</u>
PERS		23.25%, 32.48%			18,245
Social Security		7.65%			5,604
Worker's Compensation		0.35%			256
Unemployment		0.30%			220
Medical & Dental Insurance		\$1,365/mo			<u>17,854</u>
Total Personnel Services					<u><u>115,433</u></u>