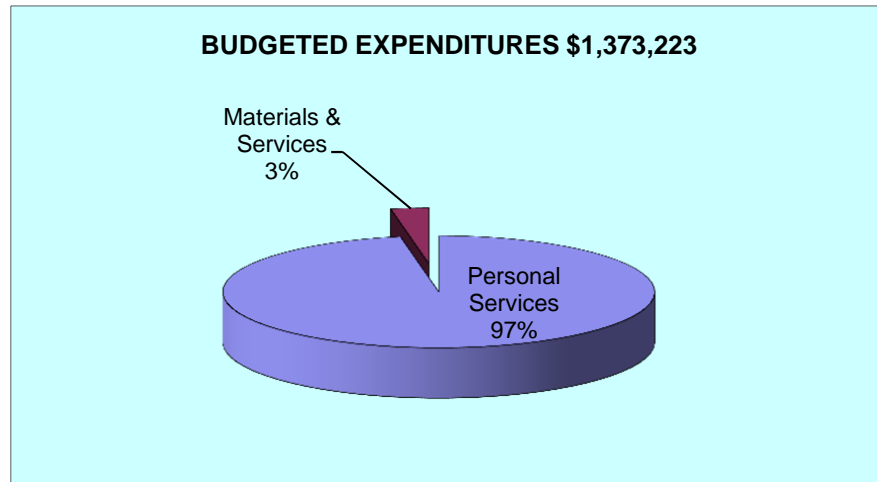
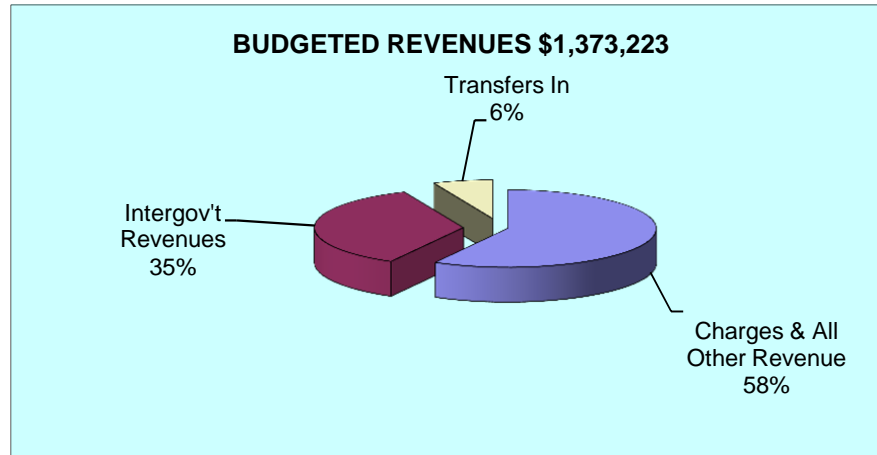
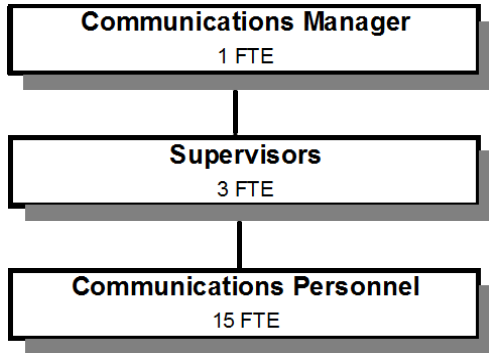


COMMUNICATIONS 911 & DISPATCH



Douglas County, Oregon
Public Safety Fund
Communications 911 and Dispatch (1800)

	Actual FY 11-12	Actual FY 12-13	Actual FY 13-14	Revised Budget FY 14-15	Proposed FY 15-16	Approved FY 15-16	Adopted FY 15-16
<u>RESOURCES</u>							
Beginning Balance	35,596	10,822	204,780				
Revenues:							
Charges and Other Revenues	865,773	864,692	730,670	759,352	797,195	797,195	797,195
Intergovernmental Revenues	316,165	521,043	510,183	475,000	486,875	486,875	486,875
Transfers In - General Fund	60,000			119,000	89,153	89,153	89,153
Transfers In - Public Works	159,851						
Total Revenue	1,401,789	1,385,735	1,240,853	1,353,352	1,373,223	1,373,223	1,373,223
TOTAL RESOURCES	1,437,385	1,396,557	1,445,633	1,353,352	1,373,223	1,373,223	1,373,223
<u>REQUIREMENTS</u>							
Personnel Services	1,739,786	1,822,460	1,812,497	1,899,530	1,931,587	1,931,587	1,931,587
Materials & Services	48,435	50,780	19,901	59,950	56,450	56,450	56,450
Capital Outlay	4,763						
	1,792,984	1,873,240	1,832,398	1,959,480	1,988,037	1,988,037	1,988,037
Less: Reimbursement from Enforcement	(366,421)	(681,463)	(605,566)	(606,128)	(614,814)	(614,814)	(614,814)
Total Expenditures	1,426,563	1,191,777	1,226,832	1,353,352	1,373,223	1,373,223	1,373,223
Ending Balance	10,822	204,780	218,801				
TOTAL REQUIREMENTS	1,437,385	1,396,557	1,445,633	1,353,352	1,373,223	1,373,223	1,373,223
Staffing FTE	20.00	20.00	20.00	20.00	19.00	19.00	19.00

Douglas County, Oregon
Public Safety Fund
Communications 911 and Dispatch

Department Detail

			Actual	Actual	Revised	Proposed	Approved	Adopted
			FY 12-13	FY 13-14	Budget	FY 15-16	FY 15-16	FY 15-16
					FY 14-15			
220-1800-2380-00	Communications Contracts	General	862,296	727,008	756,852	794,695	794,695	794,695
220-1800-3450-06	Shared Revenues	911 Revenues	521,043	510,183	475,000	486,875	486,875	486,875
220-1800-3800-01	Interest	General Investments	0	110	0	0	0	0
220-1800-3879-00	Miscellaneous	General	2,396	3,552	2,500	2,500	2,500	2,500
220-1800-3900-01	Transfers In	General Fund	0	0	119,000	89,153	89,153	89,153
Total Revenue			1,385,735	1,240,853	1,353,352	1,373,223	1,373,223	1,373,223
220-1800-4000-00	Regular Employees	General	1,014,434	1,016,385	1,045,322	1,044,593	1,044,593	1,044,593
220-1800-4050-00	Overtime	General	99,560	88,719	95,000	87,500	87,500	87,500
220-1800-4500-00	PERS	General	285,603	294,061	313,136	322,311	322,311	322,311
220-1800-4510-00	Social Security	General	82,189	80,756	87,235	86,605	86,605	86,605
220-1800-4520-00	Workers' Compensation	General	3,899	3,868	3,991	3,962	3,962	3,962
100-1800-4520-01	Workers' Compensation	Workers Comp Claims	0	1,411	0	0	0	0
220-1800-4530-00	Medical and Dental Insurance	General	317,596	321,871	353,136	383,220	383,220	383,220
220-1800-4540-00	Unemployment	General	19,179	5,426	1,710	3,396	3,396	3,396
Total Personnel Services			1,822,460	1,812,497	1,899,530	1,931,587	1,931,587	1,931,587
220-1800-5000-00	Legal Services	General	0	0	1,500	1,500	1,500	1,500
220-1800-6290-00	Software Purchases	General	134	143	1,500	1,500	1,500	1,500
220-1800-6295-00	Equipment-Noninventory	General	7,772	4,912	7,500	7,500	7,500	7,500
220-1800-6460-00	Software Rental	General	22,580	940	22,000	22,000	22,000	22,000
220-1800-6500-00	Interdept Vehicle Expense	General	672	660	2,000	2,000	2,000	2,000
220-1800-6510-02	Equip/Vehicle Main & Repair	Equip Service Contracts	686	3,720	5,000	5,000	5,000	5,000
220-1800-6680-01	Communication	Telephone	660	224	3,000	2,000	2,000	2,000
220-1800-6720-01	Fire/Liability Insurance	Liability Ins Charges	14,250	5,400	6,000	5,500	5,500	5,500
220-1800-7400-00	Office Supplies and Expenses	General	1,475	1,382	2,500	2,500	2,500	2,500
220-1800-7410-00	Postage	General	137	111	300	300	300	300
220-1800-7550-00	Travel	General	0	136	2,000	1,000	1,000	1,000
220-1800-7560-00	Conventions, Schools, Seminars	General	973	2,153	4,000	3,000	3,000	3,000

Douglas County, Oregon
 Public Safety Fund
 Communications 911 and Dispatch

Department Detail

			Actual	Actual	Revised	Proposed	Approved	Adopted
			FY 12-13	FY 13-14	Budget	FY 15-16	FY 15-16	FY 15-16
					FY 14-15			
220-1800-7580-00	Dues and Memberships	General	120	120	150	150	150	150
220-1800-7850-00	Pre-employment Testing	General	1,321	0	2,500	2,500	2,500	2,500
Total Materials and Services			50,780	19,901	59,950	56,450	56,450	56,450
Total Expenditures before Intrafund Transfers			1,873,240	1,832,398	1,959,480	1,988,037	1,988,037	1,988,037
220-1800-9899-80	Intrafund Transfers	Sheriff Enforcement	(681,463)	(605,566)	(606,128)	(614,814)	(614,814)	(614,814)
Total Expenditures			1,191,777	1,226,832	1,353,352	1,373,223	1,373,223	1,373,223

Douglas County, Oregon
Public Safety Fund
Communications 911 and Dispatch

PERSONNEL SERVICES					
	Actual	Actual	Revised	Budget	
	FTE	FTE	FTE	FY 15-16	
	<u>FY 12-13</u>	<u>FY 13-14</u>	<u>FY 14-15</u>	<u>FTE</u>	<u>Amount</u>
Communication Supervisor-Basic	3.00	3.00	3.00	3.00	194,111
Communications Officer-Basic	16.00	16.00	16.00	15.00	766,908
Sergeant	<u>1.00</u>	<u>1.00</u>	<u>1.00</u>	<u>1.00</u>	<u>83,574</u>
Total Regular	<u>20.00</u>	<u>20.00</u>	<u>20.00</u>	<u>19.00</u>	<u>1,044,593</u>
Overtime					87,500
PERS		23.25%, 27.36%, 32.48%			322,311
Social Security		7.65%			86,605
Worker's Compensation		0.35%			3,962
Unemployment		0.30%			3,396
Medical & Dental Insurance		Varied			<u>383,220</u>
Total Personnel Services					<u><u>1,931,587</u></u>