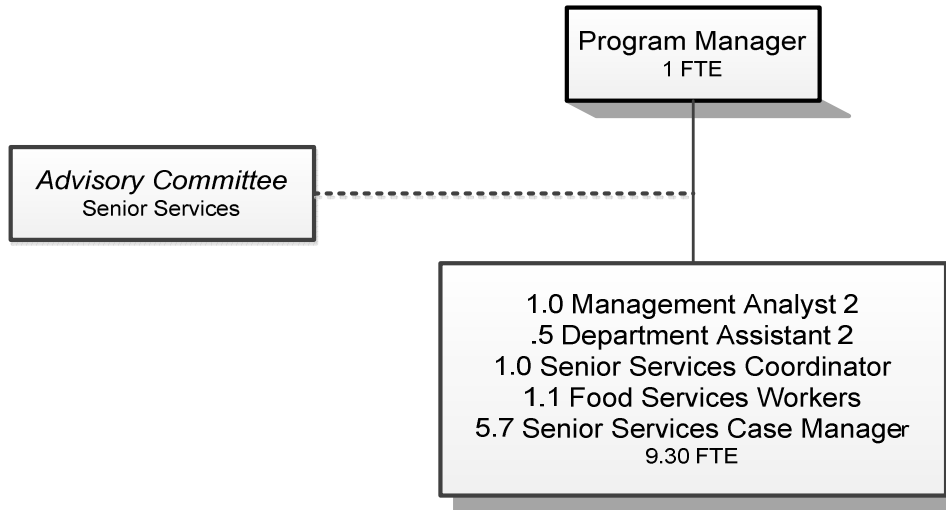


SENIOR SERVICES



Douglas County, Oregon
Health and Social Services Fund
Senior Services Division (4050)

	Actual FY 11-12	Actual FY 12-13	Actual FY 13-14	Revised Budget FY 14-15	Proposed FY 15-16	Approved FY 15-16	Adopted FY 15-16
<u>RESOURCES</u>							
Intergovernmental Revenues	766,265	825,391	915,367	1,546,240	1,335,904	1,335,904	1,335,904
Charges and Other Revenues	76,623	83,962	82,814	78,625	70,240	70,240	70,240
Interest	712						
Total	<u>843,600</u>	<u>909,353</u>	<u>998,181</u>	<u>1,624,865</u>	<u>1,406,144</u>	<u>1,406,144</u>	<u>1,406,144</u>
<u>REQUIREMENTS</u>							
Personnel Services	362,259	365,731	436,177	602,948	664,036	664,036	664,036
Materials & Services	548,550	628,472	646,351	1,180,117	834,500	834,500	834,500
Capital Outlay				2,192			
Transfers Out - General Fund	49,128	37,569	50,739	47,274	47,274	47,274	47,274
Add: Expense Reimbursements to Other Divisions	<u>50,935</u>	<u>66,361</u>	<u>64,309</u>	<u>60,763</u>			
Total	<u>1,010,873</u>	<u>1,098,133</u>	<u>1,197,576</u>	<u>1,893,294</u>	<u>1,545,810</u>	<u>1,545,810</u>	<u>1,545,810</u>
<i>Use of General County Resources</i>	167,273	188,780	199,395	268,429	139,666	139,666	139,666
Staffing FTE	7.30	7.30	9.70	9.30	10.30	10.30	10.30

Douglas County, Oregon
 Health and Social Services Fund
 Senior Services

Department Detail

			Actual	Actual	Revised Budget	Proposed	Approved	Adopted
			FY 12-13	FY 13-14	FY 14-15	FY 15-16	FY 15-16	FY 15-16
207-4050-2680-01	Senior Services Program Rev	Congregate Meals	65,515	59,755	57,125	56,296	56,296	56,296
207-4050-2680-02	Senior Services Program Rev	Home Delivered Meals	12,554	10,379	8,500	12,744	12,744	12,744
207-4050-2680-10	Senior Services Program Rev	Home Care	5,458	11,701	13,000	1,200	1,200	1,200
207-4050-3210-00	State/Fed-Sr/Disabled Div	General	0	52,027	0	0	0	0
207-4050-3210-01	State/Fed-Sr/Disabled Div	SSD Title 19 Reimbursement	58,500	83,573	107,427	92,309	92,309	92,309
207-4050-3210-03	State/Fed-Sr/Disabled Div	OAA IIIB Social Services	164,041	146,291	162,982	164,012	164,012	164,012
207-4050-3210-04	State/Fed-Sr/Disabled Div	OAA IIIC1 Congregate Meals	168,894	210,217	189,830	205,174	205,174	205,174
207-4050-3210-05	State/Fed-Sr/Disabled Div	OAA IIIC2 Home Delivered Meals	124,826	130,592	100,322	105,305	105,305	105,305
207-4050-3210-06	State/Fed-Sr/Disabled Div	USDA Cash-in-Lieu	83,306	64,332	63,448	64,332	64,332	64,332
207-4050-3210-07	State/Fed-Sr/Disabled Div	OAA IIID In-Home Service	6,125	0	8,577	14,386	14,386	14,386
207-4050-3210-15	State/Fed-Sr/Disabled Div	OAA IIIE Family Caregiver	51,612	37,665	78,055	87,419	87,419	87,419
207-4050-3210-20	State/Fed-Sr/Disabled Div	VII B Elder Abuse Prevention	4,427	40	4,452	2,226	2,226	2,226
207-4050-3220-10	State/Fed-Adult/Family Ser Div	Title 19-Home Delivered Meals	210	4,493	0	18,812	18,812	18,812
207-4050-3310-00	State-Sr/Disabled Div	General	7,142	0	1,786	0	0	0
207-4050-3310-01	State-Sr/Disabled Div	Oregon Project Independence	67,567	47,797	233,227	211,931	211,931	211,931
207-4050-3310-02	State-Sr/Disabled Div	OPI Home Care Worker	78,742	121,471	349,840	187,211	187,211	187,211
207-4050-3310-04	State-Sr/Disabled Div	ADRC Gatekeeper	0	0	59,322	46,788	46,788	46,788
207-4050-3310-05	State-Sr/Disabled Div	ADRC Options Counseling	0	1,735	56,708	31,124	31,124	31,124
207-4050-3310-06	State-Sr/Disabled Div	ADRC Mental Health	0	4,634	75,506	42,123	42,123	42,123
207-4050-3310-07	State-Sr/Disabled Div	ADRC Alzheimer's	0	0	0	20,000	20,000	20,000
207-4050-3395-00	Local Assistance	General	10,000	10,500	54,758	42,752	42,752	42,752
207-4050-3840-xx	Contributions and Donations	Various	214	206	0	0	0	0
207-4050-3875-00	Expense Reimbursements	General	220	773	0	0	0	0
Total Revenue			909,353	998,181	1,624,865	1,406,144	1,406,144	1,406,144
207-4050-4000-00	Regular Employees	General	181,804	220,126	286,256	372,979	372,979	372,979
207-4050-4030-00	Temporary Employees	General	55,691	63,346	62,523	22,000	22,000	22,000
207-4050-4050-00	Overtime	General	75	0	0	0	0	0
207-4050-4500-00	PERS	General	51,246	60,203	88,275	101,481	101,481	101,481
207-4050-4510-00	Social Security	General	17,688	21,068	26,682	30,216	30,216	30,216
207-4050-4520-00	Workers' Compensation	General	832	1,016	2,441	2,765	2,765	2,765
207-4050-4530-00	Medical and Dental Insurance	General	53,131	68,432	134,330	131,040	131,040	131,040
207-4050-4540-00	Unemployment	General	5,264	1,986	2,441	3,555	3,555	3,555
Total Personnel Services			365,731	436,177	602,948	664,036	664,036	664,036

Douglas County, Oregon
 Health and Social Services Fund
 Senior Services

Department Detail

			Actual	Actual	Revised	Proposed	Approved	Adopted
			FY 12-13	FY 13-14	Budget FY 14-15	FY 15-16	FY 15-16	FY 15-16
207-4050-5099-00	Other Professional Services	General	6,425	5,164	93,562	448	448	448
207-4050-5300-00	Health & Social Svcs Contracts	General	0	0	112,501	91,213	91,213	91,213
207-4050-5335-00	Senior Service Contracts	General	0	6,000	0	0	0	0
207-4050-5335-05	Senior Service Contracts	Food Services Contracts	211,626	214,218	247,444	245,745	245,745	245,745
207-4050-5335-07	Senior Service Contracts	Other Agency Food Service	10,815	14,840	15,449	15,449	15,449	15,449
207-4050-5335-10	Senior Service Contracts	Home Delivered Food Services	163,304	169,158	156,545	161,418	161,418	161,418
207-4050-5335-25	Senior Service Contracts	Legal Services	5,039	5,753	12,732	8,280	8,280	8,280
207-4050-5335-30	Senior Service Contracts	Adult Day Care	0	2,750	17,000	0	0	0
207-4050-5335-40	Senior Service Contracts	Options Counseling	0	0	0	3,488	3,488	3,488
207-4050-5370-10	Other Health/Welfare Contracts	Home Care Workers	78,742	121,471	349,840	187,211	187,211	187,211
207-4050-5790-55	Transport Costs	Volunteer Reimbursements	18,241	16,801	14,000	16,874	16,874	16,874
207-4050-6220-02	Household Expenses	Kitchen	131	0	50	0	0	0
207-4050-6290-00	Software Purchases	General	0	286	0	0	0	0
207-4050-6290-10	Software Purchases	Software Updates/Maintenance	0	500	0	0	0	0
207-4050-6295-00	Equipment-Noninventory	General	9,206	389	0	0	0	0
207-4050-6299-00	Other Materials and Supplies	General	14,908	1,933	3,565	2,615	2,615	2,615
207-4050-6400-00	Land and Building Rent	General	41,700	42,684	43,537	44,408	44,408	44,408
207-4050-6450-02	Equipment/Vehicle Rent	Copy Machines	1,253	1,360	1,222	1,398	1,398	1,398
207-4050-6500-00	Interdept Vehicle Expense	General	4,951	6,476	5,550	7,027	7,027	7,027
207-4050-6550-00	Building and Grounds Main	General	0	0	65,808	0	0	0
207-4050-6510-00	Equip/Vehicle Main & Repair	General	1,851	1,705	755	921	921	921
207-4050-6510-02	Equip/Vehicle Main & Repair	Equipment Service Contracts	247	366	405	452	452	452
207-4050-6680-01	Communication	Telephone	8,874	10,210	8,820	14,746	14,746	14,746
207-4050-6720-01	Fire/Liability Insurance	Liability Ins Interdept Charges	1,856	2,536	2,426	2,123	2,123	2,123
207-4050-6800-00	Laundry and Dry Cleaning	General	4,105	4,225	3,600	5,304	5,304	5,304
207-4050-6850-00	License and Permit Fees	General	0	0	0	2,140	2,140	2,140
207-4050-7300-00	Advertising/Publicity	General	3,900	0	500	1,960	1,960	1,960
207-4050-7350-00	Printing	General	0	595	0	0	0	0
207-4050-7400-00	Office Supplies and Expenses	General	3,827	2,196	1,950	2,576	2,576	2,576
207-4050-7410-00	Postage	General	1,366	1,542	1,275	1,821	1,821	1,821
207-4050-7500-00	Subscriptions & Periodicals	General	8,943	0	0	598	598	598
207-4050-7550-80	Travel	Mileage Reimbursement	8,844	4,170	3,825	4,265	4,265	4,265
207-4050-7560-00	Conventions, Schools, Seminars	General	11,100	4,711	11,056	5,955	5,955	5,955
207-4050-7580-00	Dues and Memberships	General	5,949	3,174	6,425	5,650	5,650	5,650
207-4050-7800-00	Legal Publication and Printing	General	719	772	75	0	0	0

Douglas County, Oregon
 Health and Social Services Fund
 Senior Services

Department Detail

			Actual	Actual	Revised	Proposed	Approved	Adopted
			FY 12-13	FY 13-14	Budget	FY 15-16	FY 15-16	FY 15-16
					FY 14-15			
207-4050-7820-00	Advisory Committee Expense	General	85	0	0	215	215	215
207-4050-7850-00	Pre-employment Training	General	465	366	200	200	200	200
Total Materials & Services			628,472	646,351	1,180,117	834,500	834,500	834,500
207-4050-8200-99	Furniture and Equipment	Noninventory	0	0	2,192	0	0	0
Total Capital Outlay			0	0	2,192	0	0	0
207-4050-9500-01	Transfers Out	General Fund	37,569	50,739	47,274	47,274	47,274	47,274
207-4050-9899-03	Intrafund Transfers	Community Health	2,140	2,140	2,140	0	0	0
207-4050-9899-04	Intrafund Transfers	Senior Services	(2)	0	0	0	0	0
207-4050-9899-15	Intrafund Transfers	Administration	18,489	0	0	0	0	0
207-4050-9899-22	Intrafund Transfers	Accounting	10,204	10,976	12,724	0	0	0
207-4050-9899-24	Intrafund Transfers	Offices	1,053	1,584	1,729	0	0	0
207-4050-9899-41	Intrafund Transfers	Information Technology	11,699	18,219	14,277	0	0	0
207-4050-9899-50	Intrafund Transfers	Department Administration	22,778	31,390	29,893	0	0	0
Total Other Requirements			103,930	115,048	108,037	47,274	47,274	47,274
Total Expenditures			1,098,133	1,197,576	1,893,294	1,545,810	1,545,810	1,545,810

Douglas County, Oregon
Health and Social Services Fund
Senior Services Division

PERSONNEL SERVICES					
	Actual	Actual	Revised	Budget	
	FTE	FTE	FTE	FY 15-16	
	<u>FY 12-13</u>	<u>FY 13-14</u>	<u>FY 14-15</u>	FTE	Amount
SS & Area Agency on Aging Mgr				1.00	52,394
Senior Services Program Mgr	1.00	1.00	1.00		
Senior Services Case Manager		5.40	5.20	5.70	204,915
Senior Services Coordinator	4.60	1.00	1.00	1.00	28,373
Food Service Worker	1.20	1.30	1.10	1.10	22,317
Management Analyst 2				1.00	54,830
Department Assistant 2				0.50	10,150
Office Manager 2	0.50	1.00	1.00		
Total Regular	<u>7.30</u>	<u>9.70</u>	<u>9.30</u>	<u>10.30</u>	<u>372,979</u>
Temporary					22,000
PERS		23.25%, 32.48%			101,481
Social Security		7.65%			30,216
Worker's Compensation		0.70%			2,765
Unemployment		0.90%			3,555
Medical & Dental Insurance		\$1,365/mo			<u>131,040</u>
Total Personnel Services					<u><u>664,036</u></u>