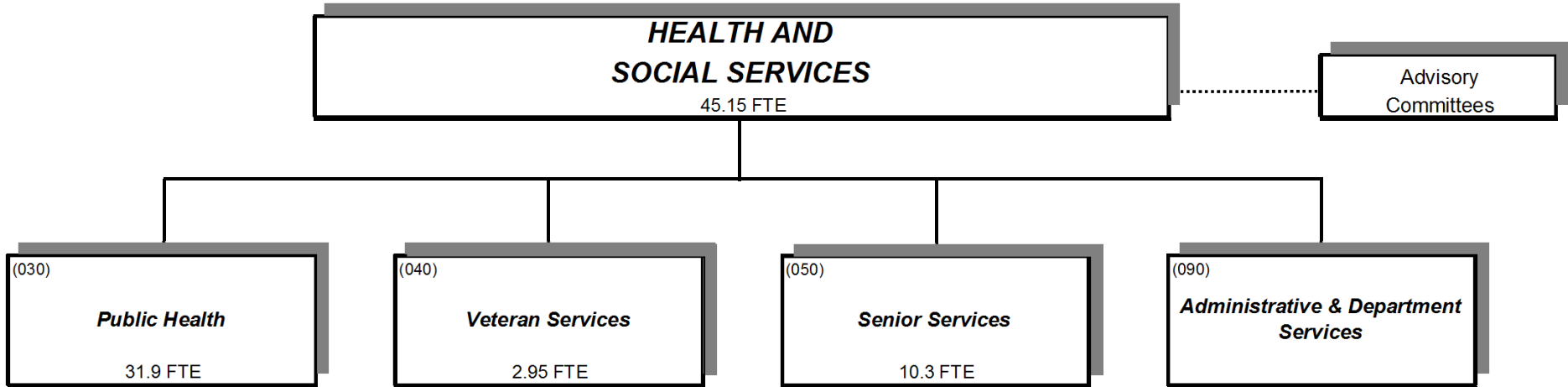
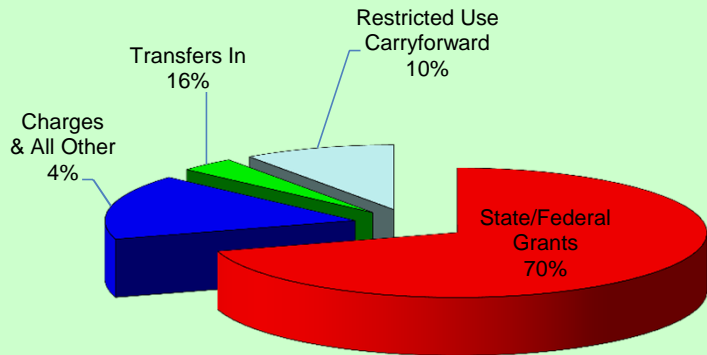


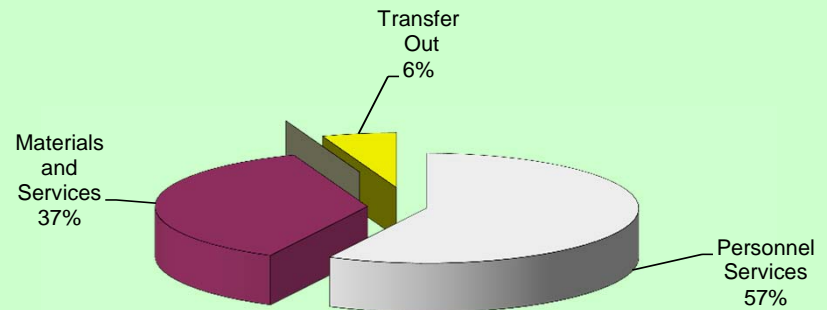
DEPARTMENT OF HEALTH AND SOCIAL SERVICES



BUDGETED RESOURCES \$5,769,766



BUDGETED REQUIREMENTS \$5,769,766



Douglas County, Oregon
Health and Social Services Fund (207)
Summary

	Actual FY 11-12	Actual FY 12-13	Actual FY 13-14	Revised Budget FY 14-15	Proposed FY 15-16	Approved FY 15-16	Adopted FY 15-16
<u>RESOURCES</u>							
<i>Beginning Fund Balance</i>							
Use Restricted by Payee	6,854,253	6,973,886	6,681,043	4,473,607	565,351	565,351	565,351
Unrestricted Use	150,000	150,000	150,000				
	<u>7,004,253</u>	<u>7,123,886</u>	<u>6,831,043</u>	<u>4,473,607</u>	<u>565,351</u>	<u>565,351</u>	<u>565,351</u>
<i>Revenues and Other Sources:</i>							
Divisional:							
Intergovernmental Revenues	24,990,205	14,765,250	14,692,106	4,570,196	4,058,770	4,058,770	4,058,770
Charges and Other Revenues	860,959	999,935	977,373	439,785	206,480	206,480	206,480
Interest	70,599	47,677	33,910				
Transfers In - General Fund	107,014	70,182	61,415				
Transfers In - Public Safety Fund	18,000	21,532	25,933	18,000			
Undesignated:							
Transfers In - General Fund	1,185,855	1,177,912	1,287,131	1,350,654	939,165	939,165	939,165
	<u>27,232,632</u>	<u>17,082,488</u>	<u>17,077,868</u>	<u>6,378,635</u>	<u>5,204,415</u>	<u>5,204,415</u>	<u>5,204,415</u>
TOTAL RESOURCES	34,236,885	24,206,374	23,908,911	10,852,242	5,769,766	5,769,766	5,769,766
<u>REQUIREMENTS</u>							
<i>Expenditures and Other Requirements:</i>							
Personnel Services	11,846,511	12,463,313	13,954,224	4,126,890	3,319,587	3,319,587	3,319,587
Materials & Services	14,486,171	4,104,880	4,523,400	6,149,492	2,123,577	2,123,577	2,123,577
Capital Outlay	82,594	109,415	50,196	22,192			
Transfers Out - General Fund	697,723	697,723	897,723	553,668	326,602	326,602	326,602
	<u>27,112,999</u>	<u>17,375,331</u>	<u>19,425,543</u>	<u>10,852,242</u>	<u>5,769,766</u>	<u>5,769,766</u>	<u>5,769,766</u>
<i>Ending Fund Balance</i>							
Use Restricted by Payee	6,973,886	6,681,043	4,325,220				
Unrestricted Use	150,000	150,000	158,148				
	<u>7,123,886</u>	<u>6,831,043</u>	<u>4,483,368</u>				
TOTAL REQUIREMENTS	34,236,885	24,206,374	23,908,911	10,852,242	5,769,766	5,769,766	5,769,766
Change in Fund Balance	119,633	(292,843)	(2,347,675)	(4,473,607)	(565,351)	(565,351)	(565,351)
Staffing FTE	177.40	179.10	197.90	73.80	45.15	45.15	45.15