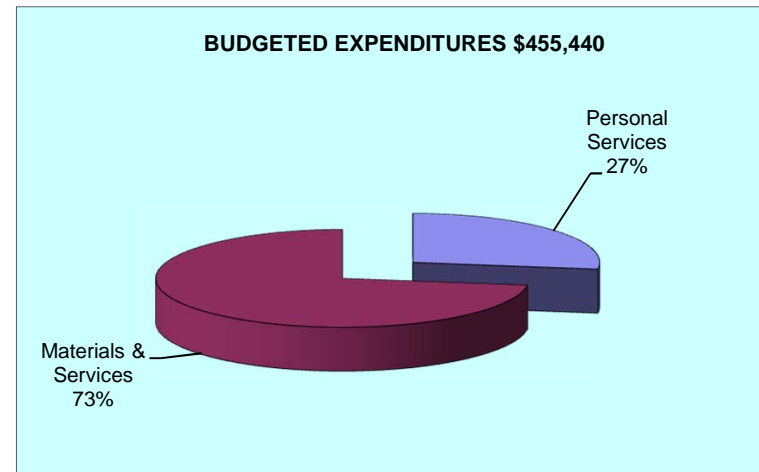
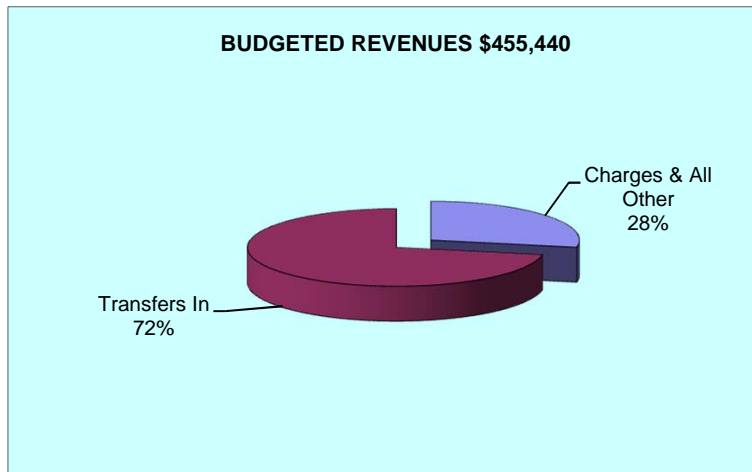
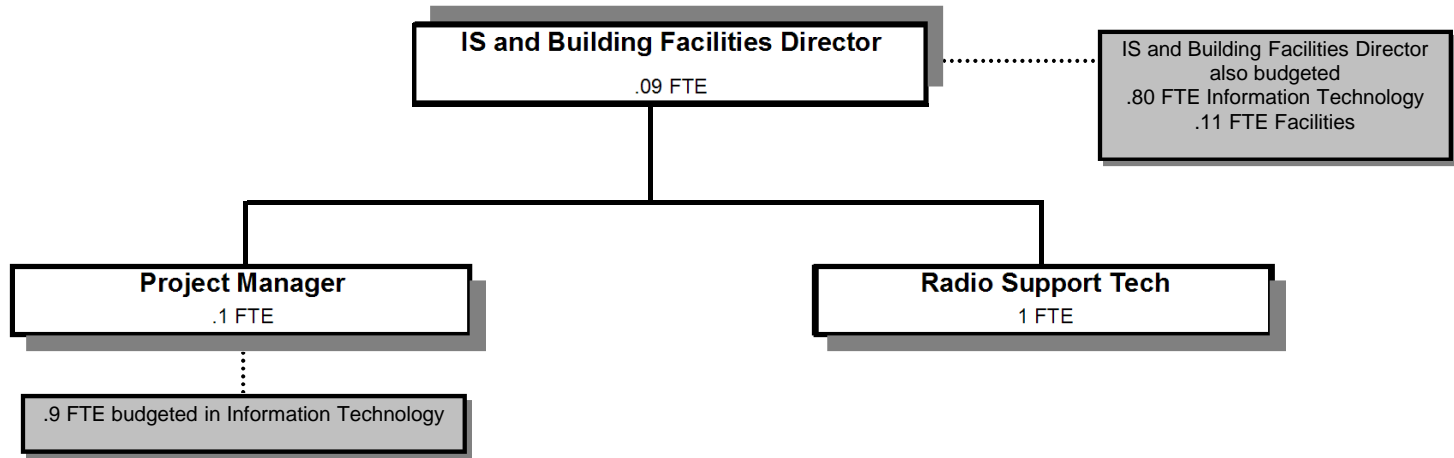


# Radio System



Douglas County, Oregon  
Public Safety Fund  
Radio System (1900)

	Actual FY 09-10	Actual FY 10-11	Actual FY 11-12	Revised Budget FY 12-13	Proposed FY 13-14	Approved FY 13-14	Adopted FY 13-14
<b><u>RESOURCES</u></b>							
Charges and Other Revenues	107,440	128,420	122,748	147,600	127,500	127,500	127,500
Intergovernmental Revenues	28,255	25,851					
Transfers In - General Fund			67,835				
Transfers In - Public Works	<u>219,333</u>	<u>223,719</u>	<u>348,576</u>	<u>348,576</u>	<u>327,940</u>	<u>327,940</u>	<u>327,940</u>
Total Revenue	<u>355,028</u>	<u>377,990</u>	<u>539,159</u>	<u>496,176</u>	<u>455,440</u>	<u>455,440</u>	<u>455,440</u>
<b><u>REQUIREMENTS</u></b>							
Personnel Services	57,524	52,949	63,147	114,242	123,962	123,962	123,962
Materials & Services	398,269	408,184	445,817	373,434	331,478	331,478	331,478
Capital Outlay	<u>62,896</u>		<u>8,995</u>	<u>8,500</u>			
Total Expenditures	<u>518,689</u>	<u>461,133</u>	<u>517,959</u>	<u>496,176</u>	<u>455,440</u>	<u>455,440</u>	<u>455,440</u>
<b><i>Resources (Under) Requirements</i></b>							
<b><i>Use of Communications 911 &amp; Dispatch Revenues*</i></b>	(163,661)	(83,143)					
<b><i>Resources Over Requirements Carryforward</i></b>							
			21,200	-	-	-	-
<b>Staffing FTE</b>							
			1.00	1.19	1.19	1.19	1.19

\*Radio System combined with Communications 911 & Dispatch FY11-12 and prior, separated FY12-13.

Douglas County, Oregon  
Public Safety Fund  
Radio System

Department Detail

			Actual	Actual	Revised	Proposed	Approved	Adopted
			FY 10-11	FY 11-12	Budget	FY 13-14	FY 13-14	FY 13-14
					FY 12-13			
220-1900-3290-33	State/Fed-Other Assistance	Interoperable Emg Comm Grant	25,851	0	0	0	0	0
220-1900-3820-50	Rents, Leases and Royalties	Radio Facility	127,520	122,748	139,100	127,500	127,500	127,500
220-1900-3879-00	Miscellaneous	General	900	0	0	0	0	0
220-1900-3879-90	Miscellaneous	Subrogating Claim Recovery	0	0	8,500	0	0	0
220-1900-3900-01	Transfers In	General Fund	0	67,835	0	0	0	0
220-1900-3900-11	Transfers In	Public Works	223,719	348,576	348,576	327,940	327,940	327,940
<b>Total Revenue</b>			<b>377,990</b>	<b>539,159</b>	<b>496,176</b>	<b>455,440</b>	<b>455,440</b>	<b>455,440</b>
220-1900-4000-00	Regular Employees	General	0	41,209	73,890	77,753	77,753	77,753
220-1900-4030-00	Temporary Employees	General	48,157	0	0	0	0	0
220-1900-4500-00	PERS	General	0	10,476	18,590	24,163	24,163	24,163
220-1900-4510-00	Social Security	General	3,684	3,070	5,653	5,948	5,948	5,948
220-1900-4520-00	Workers' Compensation	General	169	144	259	272	272	272
220-1900-4530-00	Medical and Dental Insurance	General	0	7,462	14,557	15,437	15,437	15,437
220-1900-4540-00	Unemployment	General	939	786	1,293	389	389	389
<b>Total Personnel Services</b>			<b>52,949</b>	<b>63,147</b>	<b>114,242</b>	<b>123,962</b>	<b>123,962</b>	<b>123,962</b>
220-1900-5099-00	Other Professional Services	General	123,618	67,928	71,000	15,000	15,000	15,000
220-1900-5199-10	Other Technical Services	Pacific Power Line Charge	13,925	31,176	30,000	35,000	35,000	35,000
220-1900-6065-00	Fuel and Oil	General	22,388	26,348	30,000	32,000	32,000	32,000
220-1900-6065-03	Fuel and Oil	Propane	0	1,649	500	500	500	500
220-1900-6295-00	Equipment-Noninventory	General	5,227	2,403	1,000	2,500	2,500	2,500
220-1900-6299-00	Other Materials and Supplies	General	0	1,992	0	0	0	0
220-1900-6400-00	Land and Building Rent	General	172,457	152,014	154,010	157,829	157,829	157,829
220-1900-6500-00	Interdept Vehicle Expense	General	0	0	3,000	4,200	4,200	4,200
220-1900-6510-10	Equip/Vehicle Main & Repair	Comm System M&R	65,659	154,939	80,324	80,000	80,000	80,000
220-1900-6530-00	Software Maintenance	General	3,000	5,050	0	0	0	0
220-1900-6680-01	Communication	Telephone	793	0	0	0	0	0
220-1900-6680-13	Communication	Frequency Lease	994	1,908	1,100	1,545	1,545	1,545
220-1900-7410-00	Postage	General	123	410	500	500	500	500
220-1900-7560-00	Conventions, Schools, Seminars	General	0	0	2,000	2,000	2,000	2,000
220-1900-7900-00	Miscellaneous	General	0	0	0	404	404	404
<b>Total Materials and Services</b>			<b>408,184</b>	<b>445,817</b>	<b>373,434</b>	<b>331,478</b>	<b>331,478</b>	<b>331,478</b>

Douglas County, Oregon  
 Public Safety Fund  
 Radio System

Department Detail

			Actual	Actual	Revised	Proposed	Approved	Adopted
			FY 10-11	FY 11-12	Budget	FY 13-14	FY 13-14	FY 13-14
					FY 12-13			
220-1900-8200-00	Furniture and Equipment	General	0	8,995	8500	0	0	0
<b>Total Capital Outlay</b>			<b>0</b>	<b>8,995</b>	<b>8,500</b>	<b>0</b>	<b>0</b>	<b>0</b>
<b>Total Expenditures</b>			<b>461,133</b>	<b>517,959</b>	<b>496,176</b>	<b>455,440</b>	<b>455,440</b>	<b>455,440</b>

Douglas County, Oregon  
Public Safety Fund  
Radio System

PERSONNEL SERVICES					
	Actual FTE FY 10-11	Actual FTE FY 11-12	Revised Budget FTE FY 12-13	Budget FY 13-14	
				FTE	Amount
IS and Building Facilities Director			0.09	0.09	12,891
IS Project Manager			0.10	0.10	10,325
Radio Sys Communications Tech		1.00	1.00	1.00	54,537
Total Regular		1.00	1.19	1.19	77,753
PERS		30.36%, 32.76%			24,163
Social Security		7.65%			5,948
Worker's Compensation		0.35%			272
Unemployment		0.50%			389
Medical & Dental Insurance		\$1,081/mo			15,437
Total Personnel Services					<u>123,962</u>