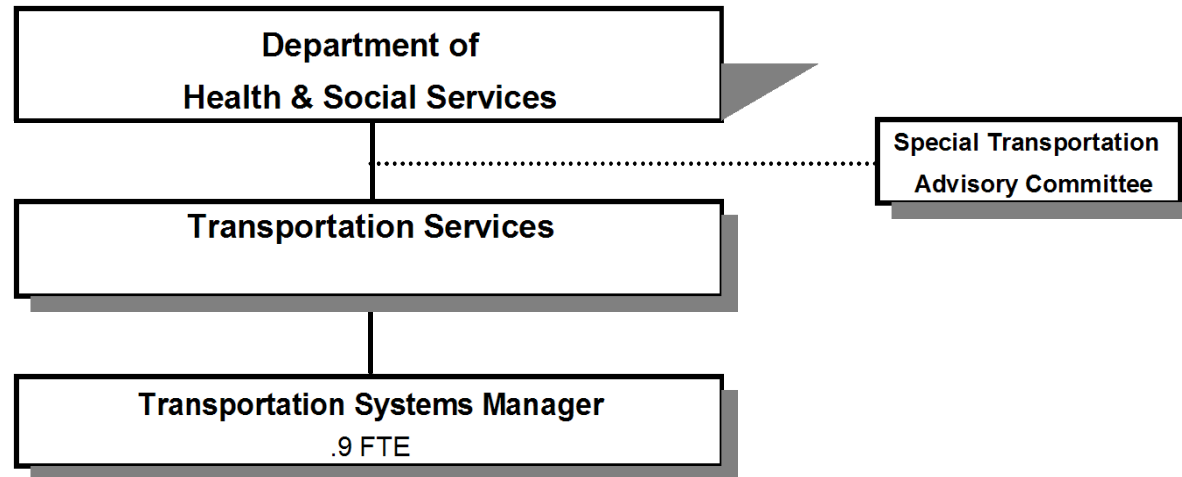


# **TRANSPORTATION SERVICES DIVISION**



## **SIGNIFICANT CHANGES IN TRANSPORTATION SERVICES PROGRAMS**

- .....Marketing/Branding project to promote the Douglas Rides Dial-A-Ride Program*
- .....Implemented central call center for scheduling an dispatch for Douglas Rides*
- .....Developed an informational website [www.DouglasRides.org](http://www.DouglasRides.org)*
- .....Coordination of providers has made Douglas Rides a community system*

Douglas County, Oregon  
Health and Social Services Fund  
Transportation Services (4060)

	Actual FY 09-10	Actual FY 10-11	Actual FY 11-12	Revised Budget FY 12-13	Proposed FY 13-14	Approved FY 13-14	Adopted FY 13-14
<b><u>RESOURCES</u></b>							
Beginning Balance (Use Restricted)	94,913	208,374	255,423	266,000	180,000	180,000	180,000
Intergovernmental Revenues	1,457,161	984,908	984,695	1,012,202	1,050,499	1,050,499	1,050,499
Charges and Other Revenues	2,150	22,425	11,109	7,001	8,201	8,201	8,201
Interest	2,683	2,597	3,323	4,094	1,800	1,800	1,800
	<u>1,461,994</u>	<u>1,009,930</u>	<u>999,127</u>	<u>1,023,297</u>	<u>1,060,500</u>	<u>1,060,500</u>	<u>1,060,500</u>
<b>TOTAL RESOURCES</b>	1,556,907	1,218,304	1,254,550	1,289,297	1,240,500	1,240,500	1,240,500
<b><u>REQUIREMENTS</u></b>							
Personnel Services	32,939	62,802	79,494	93,937	99,329	99,329	99,329
Materials & Services	758,219	867,163	969,735	1,184,986	1,157,335	1,157,335	1,157,335
Capital Outlay	607,275	74,365	4,108	30,000			
Transfers Out - General Fund	1,480	658			6,282	6,282	6,282
Add: Expense Reimbursements to Other Divisions	8,050	5,439	8,760	8,188	6,839	6,839	6,839
	<u>1,407,963</u>	<u>1,010,427</u>	<u>1,062,097</u>	<u>1,317,111</u>	<u>1,269,785</u>	<u>1,269,785</u>	<u>1,269,785</u>
Total Expenditures	1,407,963	1,010,427	1,062,097	1,317,111	1,269,785	1,269,785	1,269,785
Ending Balance (Use Restricted)	208,374	255,423	223,357				
<b>TOTAL REQUIREMENTS</b>	1,616,337	1,265,850	1,285,454	1,317,111	1,269,785	1,269,785	1,269,785
<b>Use of General County Resources</b>	59,430	47,546	30,904	27,814	29,285	29,285	29,285
<b>Staffing FTE</b>			0.90	0.90	0.90	0.90	0.90

Douglas County, Oregon  
 Health and Social Services Fund  
 Transportation Services

Department Detail

			Actual	Actual	Revised	Proposed	Approved	Adopted
			FY 10-11	FY 11-12	Budget	FY 13-14	FY 13-14	FY 13-14
					FY 12-13			
207-4060-3250-50	State/Fed-Transportation Dept	Section 5310 Mobility Mgmt	0	73,606	111,600	62,811	62,811	62,811
207-4060-3250-51	State/Fed-Transportation Dept	Section 5310 Purchased Svcs	81,978	267,195	266,800	363,356	363,356	363,356
207-4060-3250-52	State/Fed-Transportation Dept	Section 5310 Jobs in Trans Act	64,607	0	0	0	0	0
207-4060-3250-54	State/Fed-Transportation Dept	Section 5311 PM & Rehab	49,589	0	0	0	0	0
207-4060-3250-55	State/Fed-Transportation Dept	Transportation Planning	0	2,053	0	0	0	0
207-4060-3250-56	State/Fed-Transportation Dept	Section 5311 Small Cities & Rural	289,053	304,192	334,611	334,611	334,611	334,611
207-4060-3250-57	State/Fed-Transportation Dept	Section 5310 PM & Rehab	63,425	(3,355)	82,165	36,863	36,863	36,863
207-4060-3250-59	State/Fed-Transportation Dept	Section 5310 Equipment	120,184	160,000	30,000	88,832	88,832	88,832
207-4060-3350-50	State-Transportation Dept	Special Transport Operations	167,341	164,028	164,026	164,026	164,026	164,026
207-4060-3350-53	State-Transportation Dept	Special Transport - STO	148,731	16,976	23,000	0	0	0
207-4060-3800-01	Interest	General Investments	2,597	3,323	4,094	1,800	1,800	1,800
207-4060-3820-60	Rents, Leases and Royalties	Vehicles	7,000	7,001	7,001	7,001	7,001	7,001
207-4060-3870-80	Other Sales	Sale of Inventory	14,700	0	0	0	0	0
207-4060-3875-00	Expense Reimbursements	General	725	4,108	0	1,200	1,200	1,200
<b>Total Revenue</b>			<b>1,009,930</b>	<b>999,127</b>	<b>1,023,297</b>	<b>1,060,500</b>	<b>1,060,500</b>	<b>1,060,500</b>
207-4060-4000-00	Regular Employees	General	20,579	49,693	39,656	41,167	41,167	41,167
207-4060-4030-00	Temporary Employees	General	24,655	0	16,540	17,369	17,369	17,369
207-4060-4500-00	PERS	General	7,186	12,386	14,120	18,188	18,188	18,188
207-4060-4510-00	Social Security	General	3,460	3,796	4,299	4,478	4,478	4,478
207-4060-4520-00	Workers' Compensation	General	158	174	197	205	205	205
207-4060-4530-00	Medical and Dental Insurance	General	5,746	12,327	17,860	17,512	17,512	17,512
207-4060-4540-00	Unemployment	General	1,018	1,118	1,265	410	410	410
<b>Total Personnel Services</b>			<b>62,802</b>	<b>79,494</b>	<b>93,937</b>	<b>99,329</b>	<b>99,329</b>	<b>99,329</b>
207-4060-5099-00	Other Professional Services	General	0	12,677	21,500	0	0	0
207-4060-5300-00	Health & SS Contracts	General	0	0	250,130	130,367	130,367	130,367
207-4060-5335-81	Senior Service Contracts	Special Transportation-STO	151,543	11,001	23,000	0	0	0
207-4060-5335-82	Senior Service Contracts	Special Transportation-Provi	67,243	163,479	164,026	164,026	164,026	164,026
207-4060-5335-85	Senior Service Contracts	Transportation Providers	335,606	30,904	27,814	27,814	27,814	27,814
207-4060-5335-86	Senior Service Contracts	Transportation PM	107,440	0	82,165	36,863	36,863	36,863
207-4060-5335-87	Senior Service Contracts	Transportation Purchased Svcs	81,978	267,194	266,800	363,356	363,356	363,356
207-4060-5335-88	Senior Service Contracts	Transportation 5310 Equip	117,108	159,999	0	88,832	88,832	88,832
207-4060-5335-91	Senior Service Contracts	Transportation 5311 Operations	0	304,192	334,611	334,613	334,613	334,613
207-4060-6290-10	Software Purchases	Software Updates/Maintenance	0	0	2,600	0	0	0
207-4060-6295-00	Equipment-Noninventory	General	1,931	880	2,000	2,000	2,000	2,000

Douglas County, Oregon  
 Health and Social Services Fund  
 Transportation Services

Department Detail

			Actual	Actual	Revised	Proposed	Approved	Adopted
			FY 10-11	FY 11-12	Budget	FY 13-14	FY 13-14	FY 13-14
					FY 12-13			
207-4060-6299-00	Other Materials and Supplies	General	646	3,092	2,500	1,000	1,000	1,000
207-4060-6450-02	Equipment/Vehicle Rent	Copy Machines	0	1	0	0	0	0
207-4060-6500-00	Interdept Vehicle Expense	General	2,072	9,482	1,200	1,000	1,000	1,000
207-4060-6510-00	Equip/Vehicle Main & Repair	General	0	1,160	0	100	100	100
207-4060-6510-02	Equip/Vehicle Main & Repair	Equipment Service Contracts	0	19	100	50	50	50
207-4060-6680-01	Communication	Telephone	13	198	500	500	500	500
207-4060-6720-01	Fire/Liability Insurance	Liability Insurance Interdept Chg	0	0	0	314	314	314
207-4060-7300-00	Advertising/Publicity	General	0	1,657	3,500	3,000	3,000	3,000
207-4060-7400-00	Office Supplies and Expenses	General	237	35	500	500	500	500
207-4060-7410-00	Postage	General	0	0	50	50	50	50
207-4060-7500-00	Subscriptions & Periodicals	General	0	295	100	400	400	400
207-4060-7550-00	Travel	General	0	0	100	0	0	0
207-4060-7560-00	Conventions, Schools, Seminars	General	1,211	3,399	1,000	1,600	1,600	1,600
207-4060-7580-00	Dues and Memberships	General	0	0	690	750	750	750
207-4060-7800-00	Legal Publication and Printing	General	135	71	100	200	200	200
<b>Total Materials and Services</b>			<b>867,163</b>	<b>969,735</b>	<b>1,184,986</b>	<b>1,157,335</b>	<b>1,157,335</b>	<b>1,157,335</b>
207-4060-8200-99	Furniture and Equipment	Noninventory	74,365	0	30,000	0	0	0
207-4060-8300-99	Vehicles and Heavy Equipment	Noninventory	0	4,108	0	0	0	0
<b>Total Capital Outlay</b>			<b>74,365</b>	<b>4,108</b>	<b>30,000</b>	<b>0</b>	<b>0</b>	<b>0</b>
207-4060-9500-01	Transfers Out	General Fund	658	0	0	6,282	6,282	6,282
201-4060-9899-07	Intrafund Transfers	Developmental Disabilities	0	2,880	0	0	0	0
207-4060-9899-22	Intrafund Transfers	Accounting	1,481	1,432	1,707	1,595	1,595	1,595
207-4060-9899-30	Intrafund Transfers	Facilities	0	67	0	0	0	0
207-4060-9899-41	Intrafund Transfers	Info Tech	1,089	934	2,027	995	995	995
207-4060-9899-50	Intrafund Transfers	Dept. Admin	2,869	3,447	4,454	4,249	4,249	4,249
<b>Total Other</b>			<b>6,097</b>	<b>8,760</b>	<b>8,188</b>	<b>13,121</b>	<b>13,121</b>	<b>13,121</b>
<b>Total Expenditures</b>			<b>1,010,427</b>	<b>1,062,097</b>	<b>1,317,111</b>	<b>1,269,785</b>	<b>1,269,785</b>	<b>1,269,785</b>

Douglas County, Oregon  
 Health and Social Services Fund  
 Transportation Services

PERSONNEL SERVICES				
	Actual FTE FY 10-11	Actual FTE FY 11-12	Revised Budget FTE FY 12-13	Budget FY 13-14
				FTE      Amount
Transportation Systems Manager		0.90	0.90	0.90      41,167
Temporary				17,369
PERS		30.36%, 32.76%		18,188
Social Security		7.65%		4,478
Worker's Compensation		0.35%		205
Unemployment		0.70%		410
Medical & Dental Insurance		\$1,081/mo		17,512
Total Personnel Services				<u>99,329</u>

Douglas County, Oregon  
Health and Social Services Fund  
Transportation Programs

---

---

**SPECIAL TRANSPORTATION**

- .....Staffing: 0.90 FTE includes Administrative Support
  - .....Administer the Special Transportation Funds provided by ODOT
  - .....Staff the Special Transportation Advisory Committee
  - .....Update & Coordinate Transportation System Plan
  - .....Collect quarterly reports from Special Transportation Providers, monitor activity, and submit to ODOT
  - .....Monitor Special Transportation Providers programs for compliance with federal and state regulations
  - .....Monitor and Assist in Management of Special Transportation Central Call Center - DouglasRides
  - .....No County contribution to this program
- 
- 

**UMPQUA TRANSIT**

- .....Staffing: Administrative Support
  - .....Administer the 5311 Public Transportation Funds provided by ODOT
  - .....Monitor Public Transportation Provider for compliance with federal and state regulations
  - .....Collect quarterly report from Public Transportation Provider, monitor activity, and submit to ODOT
  - .....County contribution to this program is estimated at \$29,285
- 
-