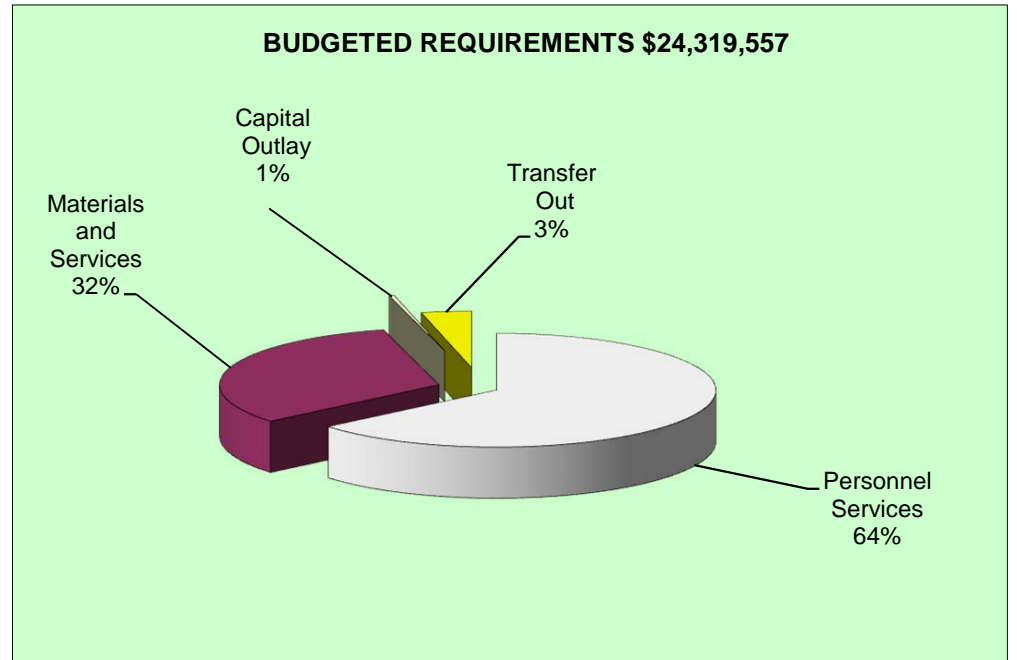
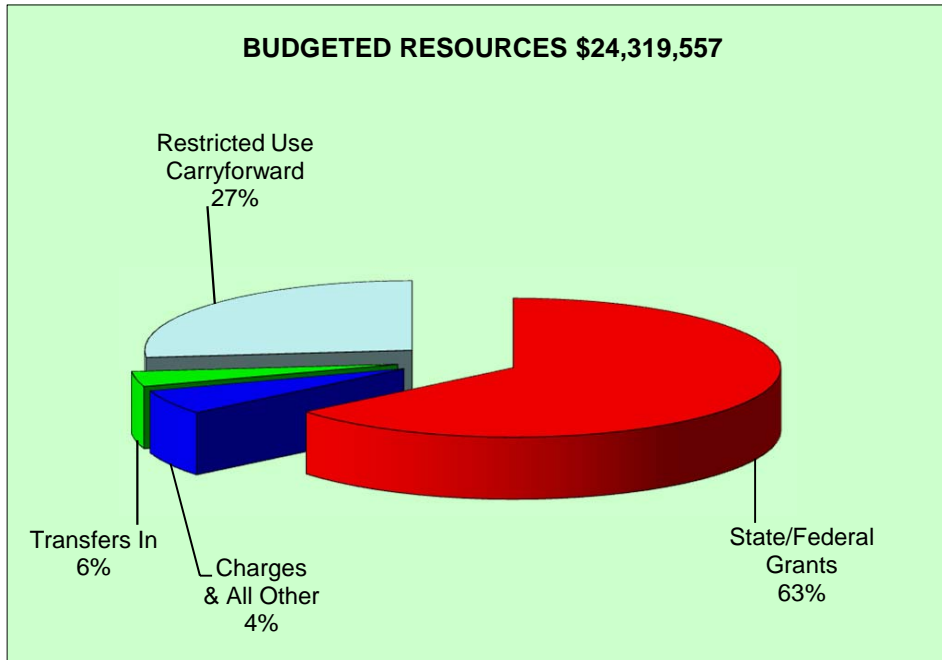
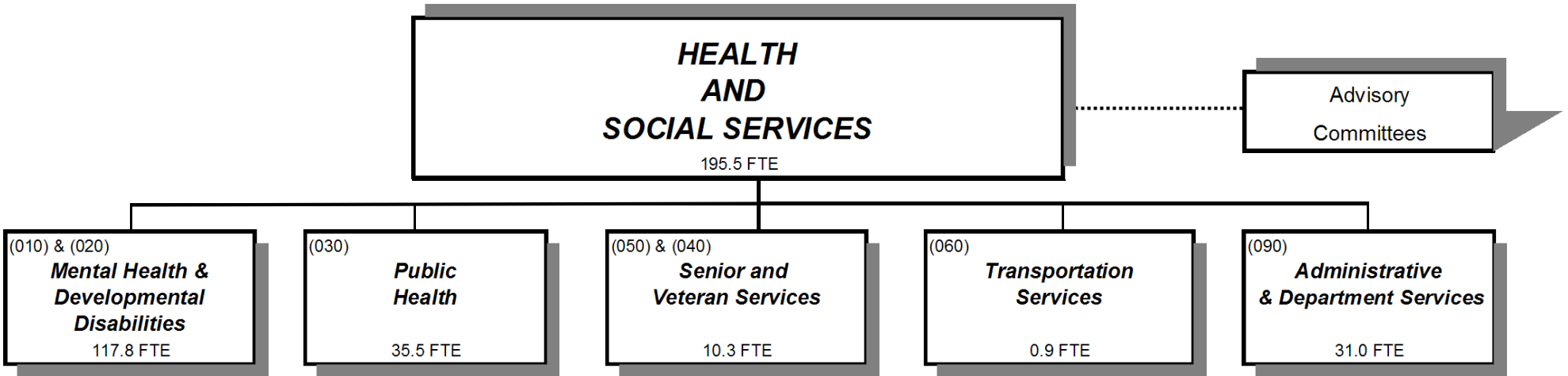


DEPARTMENT OF HEALTH AND SOCIAL SERVICES



Douglas County, Oregon
Health and Social Services Fund (207)
Summary

	Actual FY 09-10	Actual FY 10-11	Actual FY 11-12	Revised Budget FY 12-13	Proposed FY 13-14	Approved FY 13-14	Adopted FY 13-14
<u>RESOURCES</u>							
Beginning Fund Balance							
Use Restricted by Payee	3,089,116	5,447,063	6,854,253	6,071,454	6,485,394	6,485,394	6,485,394
Unrestricted Use	557,822	194,803	150,000				
	<u>3,646,938</u>	<u>5,641,866</u>	<u>7,004,253</u>	<u>6,071,454</u>	<u>6,485,394</u>	<u>6,485,394</u>	<u>6,485,394</u>
Revenues and Other Sources:							
Divisional:							
Intergovernmental Revenues	27,039,595	26,911,626	24,990,205	14,136,008	15,583,345	15,583,345	15,583,345
Charges and Other Revenues	808,583	985,807	860,959	802,419	810,166	810,166	810,166
Interest	65,563	79,986	70,599	59,094	41,800	41,800	41,800
Transfers In - General Fund	151,999	218,148	107,014	68,599	96,721	96,721	96,721
Transfers In - Public Safety Fund	18,000	18,000	18,000	21,620	15,000	15,000	15,000
Undesignated:							
Transfers In - General Fund	1,182,624	1,133,270	1,185,855	1,221,831	1,287,131	1,287,131	1,287,131
	<u>29,266,364</u>	<u>29,346,837</u>	<u>27,232,632</u>	<u>16,309,571</u>	<u>17,834,163</u>	<u>17,834,163</u>	<u>17,834,163</u>
TOTAL RESOURCES	32,913,302	34,988,703	34,236,885	22,381,025	24,319,557	24,319,557	24,319,557
<u>REQUIREMENTS</u>							
Expenditures and Other Requirements:							
Personnel Services	9,513,418	10,685,059	11,846,511	13,842,432	15,540,524	15,540,524	15,540,524
Materials & Services	16,424,156	16,440,332	14,486,171	7,697,495	7,786,160	7,786,160	7,786,160
Capital Outlay	676,373	161,248	82,594	143,375	95,150	95,150	95,150
Transfers Out - General Fund	657,489	697,811	697,723	697,723	897,723	897,723	897,723
	<u>27,271,436</u>	<u>27,984,450</u>	<u>27,112,999</u>	<u>22,381,025</u>	<u>24,319,557</u>	<u>24,319,557</u>	<u>24,319,557</u>
Ending Fund Balance							
Use Restricted by Payee	5,447,063	6,854,253	6,973,886				
Unrestricted Use	194,803	150,000	150,000				
	<u>5,641,866</u>	<u>7,004,253</u>	<u>7,123,886</u>	-	-	-	-
TOTAL REQUIREMENTS	32,913,302	34,988,703	34,236,885	22,381,025	24,319,557	24,319,557	24,319,557
Staffing FTE	159.05	173.93	177.40	179.10	195.50	195.50	195.50