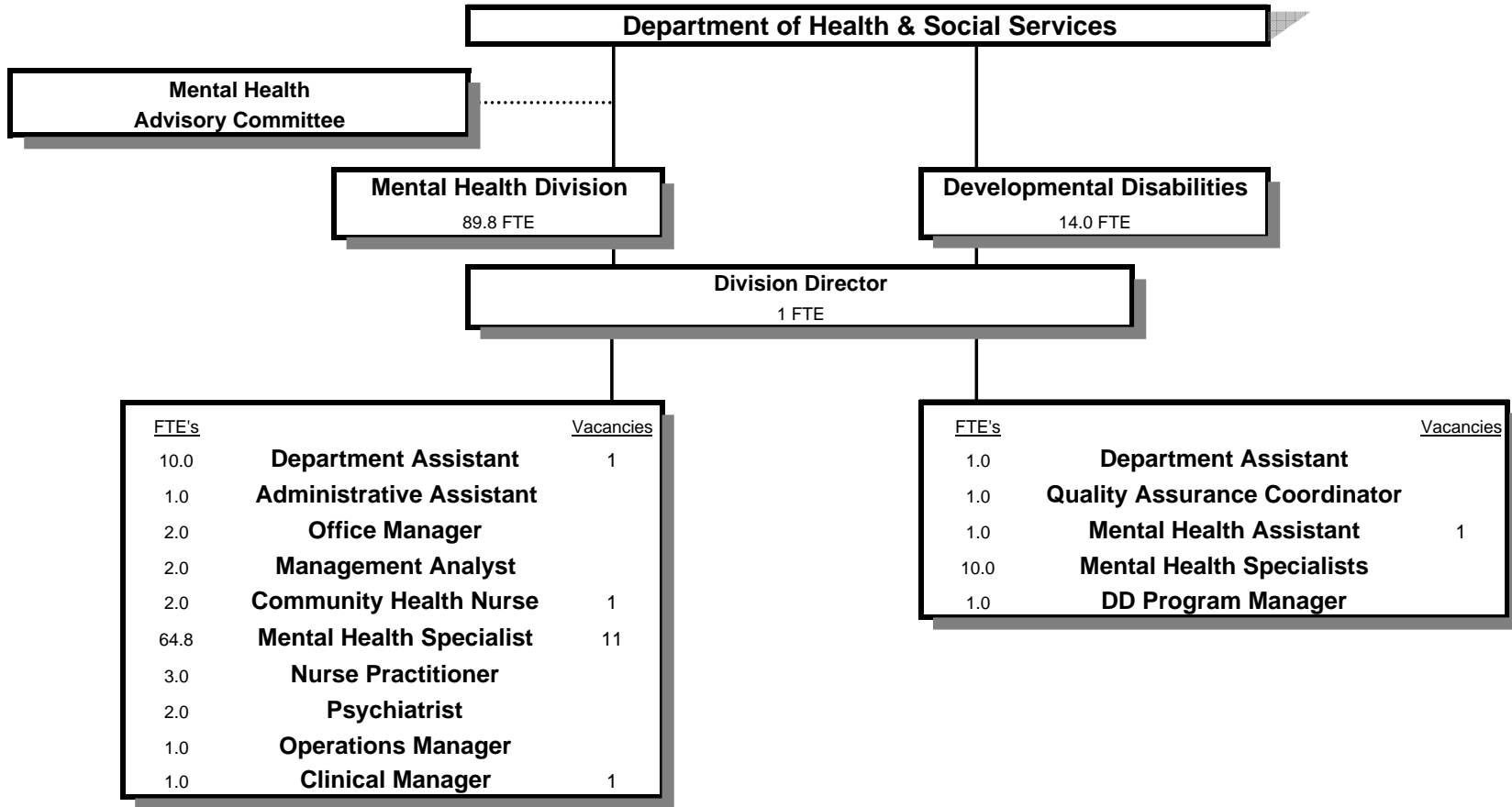


MENTAL HEALTH and DEVELOPMENTAL DISABILITIES DIVISION



SIGNIFICANT CHANGES IN THE MENTAL HEALTH PROGRAMS

-Improvement and customization of Electronic Medical Records System.*
-MH records moved to Central Medical Records Unit improving efficiency.*
-Improved Efficiencies in Cost Containment/Working Budget.*
-Crisis Response Team improving Rate of Acute Care Hospitalizations and increasing Coordination with Mercy Medical Center*
-EASA program implemented to improve outcomes of people experiencing first psychotic break.*
-DD Program fully integrated into Mental Health Division.*

Douglas County, Oregon
 Health and Social Services Fund
 Mental Health (4010) and Developmental Disabilities (4020) Division

	Actual FY 08-09	Actual FY 09-10	Actual FY 10-11	Revised Budget FY 11-12	Proposed FY 12-13	Approved FY 12-13	Adopted FY 12-13
<u>RESOURCES</u>							
Beginning Balance (Use Restricted)				6,425,506	5,483,300	5,483,300	5,483,300
Revenues and Other Sources:							
Intergovernmental Revenues				22,760,195	8,959,469	8,959,469	8,959,469
Charges and Other Revenues				96,000	91,000	91,000	91,000
Interest				50,000	55,000	55,000	55,000
Transfers In - General Fund Juvenile Dept				184,142	68,599	68,599	68,599
				<u>23,090,337</u>	<u>9,174,068</u>	<u>9,174,068</u>	<u>9,174,068</u>
TOTAL RESOURCES				29,515,843	14,657,368	14,657,368	14,657,368
<u>REQUIREMENTS</u>							
Personnel Services				8,454,643	8,639,657	8,639,657	8,639,657
Materials & Services				18,918,675	3,787,515	3,787,515	3,787,515
Capital Outlay				87,500	58,500	58,500	58,500
Transfers Out - General Fund				454,587	500,609	500,609	500,609
Add: Expense Reimbursements to Other Divisions				1,600,438	1,671,087	1,671,087	1,671,087
Total Expenditures				<u>29,515,843</u>	<u>14,657,368</u>	<u>14,657,368</u>	<u>14,657,368</u>
TOTAL REQUIREMENTS				29,515,843	14,657,368	14,657,368	14,657,368
Staffing FTE				102.30	103.80	103.80	103.80

Capital Outlay is for Building Improvements and Furniture for Creekside Building and Profiler Related Software

Douglas County, Oregon
 Health and Social Services Fund
 Mental Health and Developmental Disabilities Division

Department Detail

			Revised				
			Budget	Proposed	Approved	Adopted	
			FY 09-10	FY 10-11	FY 11-12	FY 12-13	FY 12-13
207-4010-2280-02	Duplicating Services	Photocopies			7,500	0	0
207-4010-2510-00	Gen Medical Patient Fees	General			4,000	6,000	6,000
207-4010-2515-00	Medicare	General			40,000	40,000	40,000
207-4010-2520-00	Third Party Payee	General			35,000	35,000	35,000
207-4010-3220-06	State/Fed-Adult/Family Ser Div	Title 19-Outpatient			70,000	153,000	153,000
207-4010-3230-01	State/Fed-Mental Health Div	Comm Treat Serv-Child & Adol			180,308	143,105	143,105
207-4010-3230-07	State/Fed-Mental Health Div	Local Administration			277,952	277,952	277,952
207-4010-3230-18	State/Fed-Mental Health Div	Older/Disabled MH Services			9,735	0	0
207-4010-3230-23	State/Fed-Mental Health Div	Acute Care			478,281	495,320	495,320
207-4010-3230-24	State/Fed-Mental Health Div	Community Crisis Services			281,526	278,663	278,663
207-4010-3230-31	State/Fed-Mental Health Div	SE20 Case Management			86,707	86,707	86,707
207-4010-3230-32	State/Fed-Mental Health Div	SE20 Jail Diversion			47,719	47,719	47,719
207-4010-3290-76	State/Fed-Other Assistance	OR Dept of Corrections			83,472	0	0
207-4010-3330-03	State-Mental Health Div	Non-residential Adult Ser			454,682	419,027	419,027
207-4010-3330-06	State-Mental Health Div	Psy Security Review Board			26,468	10,588	10,588
207-4010-3390-90	State-Other Assistance	OHP-GOBHI			5,640,924	5,516,447	5,516,447
207-4010-3390-91	State-Other Assistance	GOBHI Wrap-Around			100,000	0	0
207-4010-3390-94	State-Other Assistance	AMHI			45,000	75,000	75,000
207-4010-3450-55	Shared Revenues	Mediation Fees (Divorces)			70,000	80,000	80,000
207-4010-3550-52	Cost Share	Health-School Contract			225,255	200,000	200,000
207-4010-3800-01	Interest	General Investments			50,000	55,000	55,000
207-4010-3840-20	Contributions and Donations	Fowler House			7,500	5,000	5,000
207-4010-3875-00	Expense Reimbursements	General			2,000	5,000	5,000
207-4010-3900-01	Transfers In	General Fund			184,142	68,599	68,599
207-4020-3230-02	State/Fed-Mental Health Div	MR/DD Case Management			723,005	723,003	723,003
207-4020-3230-05	State/Fed-Mental Health Div	Residential Training			10,022,043	0	0
207-4020-3230-07	State/Fed-Mental Health Div	Local Administration			248,302	248,301	248,301
207-4020-3230-10	State/Fed-Mental Health Div	DD Vocational Services			2,554,640	0	0
207-4020-3230-11	State/Fed-Mental Health Div	DD Abuse Investigation			62,223	74,827	74,827
207-4020-3230-12	State/Fed-Mental Health Div	DD Transportation Services			334,359	0	0
207-4020-3230-14	State/Fed-Mental Health Div	DD Family Support			0	15,193	15,193
207-4020-3230-15	State/Fed-Mental Health Div	Rent Subsidies			95,299	0	0
207-4020-3230-16	State/Fed-Mental Health Div	Supported Living			411,008	0	0
207-4020-3230-17	State/Fed-Mental Health Div	SE151 LT Support-Children			48,000	11,448	11,448
207-4020-3230-20	State/Fed-Mental Health Div	Nursing Facility Special Svcs			13,752	0	0

Douglas County, Oregon
Health and Social Services Fund
Mental Health and Developmental Disabilities Division

Department Detail

			Actual	Actual	Revised	Proposed	Approved	Adopted
			FY 09-10	FY 10-11	Budget	FY 12-13	FY 12-13	FY 12-13
					FY 11-12			
207-4020-3230-21	State/Fed-Mental Health Div	Comprehensive In Home Support			133,800	103,169	103,169	103,169
207-4020-3350-50	State-Transportation	Special Transport Operations Asst			35,735	0	0	0
Total Revenue			0	0	23,090,337	9,174,068	9,174,068	9,174,068
207-4010-4000-00	Regular Employees	General			4,468,427	4,524,048	4,524,048	4,524,048
207-4010-4030-00	Temporary Employees	General			389,500	389,500	389,500	389,500
207-4010-4500-00	PERS	General			1,214,052	1,223,488	1,223,488	1,223,488
207-4010-4510-00	Social Security	General			371,632	375,886	375,886	375,886
207-4010-4520-00	Workers' Compensation	General			17,003	17,198	17,198	17,198
207-4010-4530-00	Medical and Dental Insurance	General			1,099,152	1,094,854	1,094,854	1,094,854
207-4010-4540-00	Unemployment	General			109,303	110,555	110,555	110,555
207-4020-4000-00	Regular Employees	General			426,577	485,758	485,758	485,758
207-4020-4030-00	Temporary Employees	General			38,355	67,551	67,551	67,551
207-4020-4500-00	PERS	General			116,314	128,958	128,958	128,958
207-4020-4510-00	Social Security	General			35,568	42,329	42,329	42,329
207-4020-4520-00	Workers' Compensation	General			1,627	1,937	1,937	1,937
207-4020-4530-00	Medical and Dental Insurance	General			156,672	165,146	165,146	165,146
207-4020-4540-00	Unemployment	General			10,461	12,449	12,449	12,449
Total Personnel Services			0	0	8,454,643	8,639,657	8,639,657	8,639,657
207-4010-5030-01	Physician Services	Roseburg Clinic			48,100	0	0	0
207-4010-5040-00	Medical and Hospital Services	General			729,335	0	0	0
207-4010-5099-00	Other Professional Services	General			24,000	39,780	39,780	39,780
207-4010-5099-20	Other Professional Services	Health Services			8,529	5,000	5,000	5,000
207-4010-5099-21	Other Professional Services	PSRB & Special Projects			70,000	0	0	0
207-4010-5300-00	Mental Health Contracts	General			121,832	182,699	182,699	182,699
207-4010-5300-01	Mental Health Contracts	24 Hr. Crisis on Call			19,000	20,390	20,390	20,390
207-4010-5300-02	Mental Health Contracts	Security Transport			26,436	0	0	0
207-4010-5300-60	Mental Health Contracts	Mercy Hospital			114,000	0	0	0
207-4010-5300-61	Mental Health Contracts	Mercy-Oregon Health Plan			30,000	0	0	0
207-4010-5300-64	Mental Health Contracts	SE 24 Services			0	338,281	338,281	338,281
207-4010-5300-75	Mental Health Contracts	Treatment Foster Home			400,802	822,624	822,624	822,624
207-4010-5300-76	Mental Health Contracts	Group Homes			500,000	822,624	822,624	822,624
207-4010-5370-01	Other Health/Welfare Contracts	Expanded Program Development			12,000	0	0	0
207-4010-5374-00	Crisis/Respite	General			525,000	0	0	0
207-4010-5374-03	Crisis/Respite	SE22 Indigent Child			0	5,000	5,000	5,000

Douglas County, Oregon
 Health and Social Services Fund
 Mental Health and Developmental Disabilities Division

Department Detail

			Revised				
			Budget	Proposed	Approved	Adopted	
			FY 11-12	FY 12-13	FY 12-13	FY 12-13	
			Actual	Actual			
			FY 09-10	FY 10-11			
207-4010-5374-04	Crisis/Respite	OHP Adult	0		10,000	10,000	10,000
201-4010-5810-45	Client Services/Activities	ICTS Expense OHP Child	0		10,000	10,000	10,000
207-4010-5810-50	Client Services/Activities	AMHI Program	45,000		45,000	45,000	45,000
207-4010-6100-00	Medical Supplies	General	19,935		7,018	7,018	7,018
207-4010-6200-00	Food and meals	General	7,500		7,500	7,500	7,500
207-4010-6290-00	Software Purchases	General	15,000		40,280	40,280	40,280
207-4010-6290-10	Software Purchases	Software Updates/Maintenance	1,059		6,805	6,805	6,805
207-4010-6295-00	Equipment-Noninventory	General	27,400		33,900	33,900	33,900
207-4010-6299-00	Other Materials and Supplies	General	10,035		10,001	10,001	10,001
207-4010-6299-20	Other Materials and Supplies	Flexible Services-JBH	470,350		10,000	10,000	10,000
207-4010-6299-22	Other Materials and Supplies	Flex Svc-Indigent Adult	0		5,000	5,000	5,000
207-4010-6299-52	Other Materials and Supplies	Treatment/Recreational Activities	501,000		1,000	1,000	1,000
207-4010-6450-02	Equipment/Vehicle Rent	Copy Machines	8,894		12,394	12,394	12,394
207-4010-6500-00	Interdept Vehicle Expense	General	45,000		25,599	25,599	25,599
207-4010-6510-00	Equip/Vehicle Main & Repair	General	1,000		23,600	23,600	23,600
207-4010-6510-02	Equip/Vehicle Main & Repair	Equipment Service Contracts	0		1,800	1,800	1,800
207-4010-6680-01	Communication	Telephone	46,531		45,999	45,999	45,999
207-4010-6685-00	Utilities	General	15,000		25,000	25,000	25,000
207-4010-6720-01	Fire/Liability Insurance	Liability Interdept Charge	15,252		19,532	19,532	19,532
207-4010-6720-05	Fire/Liability Insurance	Professional Liability Insurance	19,212		19,086	19,086	19,086
207-4010-7400-00	Office Supplies and Expenses	General	21,075		12,488	12,488	12,488
207-4010-7410-00	Postage	General	8,422		3,922	3,922	3,922
207-4010-7420-01	Duplicating Services	Photos, Photostats, Copying	2,500		3,800	3,800	3,800
207-4010-7500-00	Subscriptions & Periodicals	General	1,395		1,400	1,400	1,400
207-4010-7550-00	Travel	General	1,589		1,500	1,500	1,500
207-4010-7550-80	Travel	Mileage Reimbursement	25,700		25,700	25,700	25,700
207-4010-7560-00	Conventions, Schools, Seminars	General	60,000		59,993	59,993	59,993
207-4010-7580-00	Dues and Memberships	General	27,500		27,500	27,500	27,500
207-4010-7800-00	Legal Publication and Printing	General	8,603		4,000	4,000	4,000
207-4010-7820-00	Advisory Committee Expense	General	2,500		1,850	1,850	1,850
207-4010-7850-00	Pre-employment Testing	General	2,400		2,000	2,000	2,000
207-4020-5300-00	Mental Health Contracts	General	1,439,755		871,304	871,304	871,304
207-4020-5300-10	Mental Health Contracts	Sunrise-Activity Center	1,243,259		0	0	0
207-4020-5300-13	Mental Health Contracts	Sunrise-Transportation	91,135		0	0	0
207-4020-5300-20	Mental Health Contracts	DRTF-Employment Transportation	157,440		0	0	0
207-4020-5300-21	Mental Health Contracts	DRTF-Residential Facilities	2,606,070		0	0	0
207-4020-5300-22	Mental Health Contracts	DRTF-Supported Living	236,481		0	0	0
207-4020-5300-23	Mental Health Contracts	DRTF-Rent Subsidy	26,414		0	0	0

Douglas County, Oregon
Health and Social Services Fund
Mental Health and Developmental Disabilities Division

Department Detail

			Actual	Actual	Revised	Proposed	Approved	Adopted
			FY 09-10	FY 10-11	Budget	FY 12-13	FY 12-13	FY 12-13
					FY 11-12			
207-4020-5300-35	Mental Health Contracts	Mentor Svcs-Rent Subsidy			21,978	0	0	0
207-4020-5300-36	Mental Health Contracts	National Mentor-Residential			720,900	0	0	0
207-4020-5300-37	Mental Health Contracts	Mentor Svcs-Supported Living			174,527	0	0	0
207-4020-5300-38	Mental Health Contracts	Mentor Svcs-Transportation			7,456	0	0	0
207-4020-5300-39	Mental Health Contracts	Mentor Svcs-Activity Center			488,280	0	0	0
207-4020-5300-40	Mental Health Contracts	UHH-Activity Center			385,312	0	0	0
207-4020-5300-41	Mental Health Contracts	UHH-Employment Transportation			171,120	0	0	0
207-4020-5300-43	Mental Health Contracts	UHH-Rent Subsidy			21,491	0	0	0
207-4020-5300-44	Mental Health Contracts	UHH-Residential Facilities			6,194,751	0	0	0
207-4020-5300-54	Mental Health Contracts	Dungarvin OR-Residential Svcs			500,322	0	0	0
207-4020-5300-55	Mental Health Contracts	Dungarvin OR-Transportation			10,560	0	0	0
207-4020-5300-56	Mental Health Contracts	Dungarvin OR-Rent Subsidy			19,064	0	0	0
207-4020-5300-68	Mental Health Contracts	Goodwill, Inc			137,789	0	0	0
207-4020-5335-38	Senior Service Contracts	Comprehensive In Home Support			114,619	103,169	103,169	103,169
207-4020-5370-30	Other Health/Welfare Contracts	Medicaid Match			17,867	0	0	0
207-4020-5374-01	Crisis/Respite	DD Family Support			0	15,193	15,193	15,193
207-4020-5374-02	Crisis/Respite	UVDN SE151 LT Support-Children			48,000	11,448	11,448	11,448
207-4020-5790-50	Transport Costs	Client Transport			540	0	0	0
207-4020-6290-10	Software Purchases	Software Updates/Maintenance			212	1,061	1,061	1,061
204-4020-6295-00	Equipment-Noninventory	General			0	2,900	2,900	2,900
207-4020-6299-00	Other Materials and Supplies	General			2,250	3,200	3,200	3,200
207-4020-6450-02	Equipment/Vehicle Rent	Copy Machines			2,164	2,164	2,164	2,164
207-4020-6500-00	Interdept Vehicle Expense	General			12,700	9,170	9,170	9,170
207-4020-6510-00	Equip/Vehicle Main & Repair	General			1,406	4,936	4,936	4,936
207-4020-6510-02	Equip/Vehicle Main & Repair	Equipment Service Contracts			1,000	1,000	1,000	1,000
207-4020-6680-01	Communication	Telephone			4,400	4,400	4,400	4,400
207-4020-6720-01	Fire/Liability Insurance	Liability Interdept Charge			3,180	3,215	3,215	3,215
207-4020-6720-05	Fire/Liability Insurance	Professional Liability Insurance			2,343	2,586	2,586	2,586
207-4020-7400-00	Office Supplies and Expenses	General			5,300	2,500	2,500	2,500
207-4020-7410-00	Postage	General			2,200	2,200	2,200	2,200
207-4020-7550-00	Travel	General			100	100	100	100
207-4020-7550-80	Travel	Mileage Reimbursement			150	300	300	300
207-4020-7560-00	Conventions, Schools, Seminars	General			6,204	6,204	6,204	6,204
207-4020-7800-00	Legal Publication and Printing	General			750	300	300	300
207-4020-7850-00	Pre-employment Testing	General			300	100	100	100
Total Materials & Services			0	0	18,918,675	3,787,515	3,787,515	3,787,515

Douglas County, Oregon
 Health and Social Services Fund
 Mental Health and Developmental Disabilities Division

Department Detail

			Actual	Actual	Revised	Proposed	Approved	Adopted
			FY 09-10	FY 10-11	Budget	FY 12-13	FY 12-13	FY 12-13
						FY 11-12		
207-4010-8100-99	Building and Improvements	Noninventory			30,000	20,000	20,000	20,000
207-4010-8200-00	Furniture and Equipment	General			10,000	0	0	0
207-4010-8200-99	Furniture and Equipment	Noninventory			47,500	18,500	18,500	18,500
207-4020-8200-99	Furniture and Equipment	Noninventory			0	20,000	20,000	20,000
Total Capital Outlay			0	0	87,500	58,500	58,500	58,500
207-4010-9500-01	Transfers Out	General Fund			397,989	435,549	435,549	435,549
207-4010-9899-22	Intrafund Transfers	Accounting			136,337	123,064	123,064	123,064
207-4010-9899-24	Intrafund Transfers	Offices			92,216	94,640	94,640	94,640
207-4010-9899-26	Intrafund Transfers	Medical Records			203,379	195,384	195,384	195,384
207-4010-9899-27	Intrafund Transfers	Client Accounts			198,984	195,941	195,941	195,941
207-4010-9899-28	Intrafund Transfers	Central Registration			244,431	244,152	244,152	244,152
207-4010-9899-40	Intrafund Transfers	MIS			265,884	237,416	237,416	237,416
207-4010-9899-41	Intrafund Transfers	Info Tech			88,506	104,600	104,600	104,600
207-4010-9899-50	Intrafund Transfers	Dept. Admin			261,680	321,190	321,190	321,190
207-4020-9500-01	Transfers Out	General Fund			56,598	65,060	65,060	65,060
207-4020-9899-22	Intrafund Transfers	Accounting			16,871	20,253	20,253	20,253
207-4020-9899-26	Intrafund Transfers	Medical Records			20,984	25,155	25,155	25,155
207-4020-9899-40	Intrafund Transfers	MIS			27,433	39,217	39,217	39,217
207-4020-9899-41	Intrafund Transfers	Info Tech			11,352	17,215	17,215	17,215
207-4020-9899-50	Intrafund Transfers	Dept. Admin			32,381	52,860	52,860	52,860
Total Other Requirements			0	0	2,055,025	2,171,696	2,171,696	2,171,696
Total Expenditures			0	0	29,515,843	14,657,368	14,657,368	14,657,368

Douglas County, Oregon
Health and Social Services Fund
Mental Health and Developmental Disabilities Division

PERSONNEL SERVICES									
	Actual	Actual	Revised Budget	Budget FY 12-13					
	FTE	FTE	FTE	Mental Health		Developmental Disabilities		Total Department	
	FY 09-10	FY 10-11	FY 11-12	FTE	Amount	FTE	Amount	FTE	Amount
DD Services Pgm Mgr			1.00			1.00	45,082	1.00	45,082
Psychiatrist			2.00	2.00	438,533			2.00	438,533
Mental Health Division Dir			1.00	1.00	77,283			1.00	77,283
Mental Health Clinical Mgr				1.00	67,766			1.00	67,766
Psychiatric Nurse Practitioner			3.00	3.00	368,845			3.00	368,845
Day Treatment Supervisor			2.00						
Mental Health Specialist 5			5.00	5.00	266,352			5.00	266,352
Mental Health Specialist 4			7.80	6.80	376,354			6.80	376,354
Mental Health Specialist 3			30.00	32.00	1,593,855			32.00	1,593,855
Mental Health Specialist 2			12.00	9.00	362,342	3.00	107,631	12.00	469,973
Mental Health Specialist 1			18.00	12.00	397,696	7.00	246,204	19.00	643,900
Mental Health Operations Mgr			1.00	1.00	53,009			1.00	53,009
Community Health Nurse 3			2.00	2.00	96,111			2.00	96,111
Management Analyst 3			2.00	2.00	88,891			2.00	88,891
Mental Health Assistant						1.00	27,144	1.00	27,144
Quality Assurance Coordinator			1.00			1.00	36,374	1.00	36,374
Administrative Assistant			1.00	1.00	38,411			1.00	38,411
Office Manager 2			1.50	1.00	28,018			1.00	28,018
Office Manager 1			1.00	1.00	33,010			1.00	33,010
Department Assistant 4			11.00	10.00	237,572	1.00	23,323	11.00	260,895
Total Regular			102.30	89.80	4,524,048	14.00	485,758	103.80	5,009,806
Temporary					389,500		67,551		457,051
PERS	24.60%, 26.39%				1,223,488		128,958		1,352,446
Social Security	7.65%				375,886		42,329		418,215
Worker's Compensation	0.35%				17,198		1,937		19,135
Unemployment	2.25%				110,555		12,449		123,004
Medical & Dental Insurance	\$1,019/mo				1,094,854		165,146		1,260,000
Total Personnel Services					7,735,529		904,128		8,639,657

Douglas County, Oregon
Health and Social Services Fund
Mental Health and Developmental Disabilities Programs

CLINICAL SERVICES

-Staffing: 64.80 FTE
 -Provide screening and assessment to determine acuity and risk; make appropriate referrals for treatment or linkage in the community.
 -Treat persons through therapy, groups, psycho-education, skills training, and medication management.
 -Provide school based treatment for children and adolescents and consultation to teachers.
 -Coordination with Primary Care Physicians to improve access to care and target services to those with acute needs.
 -Service to Juvenile Detention Center, adult corrections, and consultation to the jail.
 -Provide court ordered Mediation Services to divorcing parents through child custody and visitation plans.
 -Provide 24/7 crisis services including response to Mercy Hold Rooms.
 -Provide evidence based Supportive Employment Services to qualified individuals.
 -Coordinate AMHI (Adult Mental Health Initiative) -- the transition of adults from higher levels of care including state hospital to their community.
 -Coordinate EASA (Early Assessment and Support Alliance) for those individuals and families experiencing first psychosis.
 -Provide continuum of care through Family Care Coordinators, Skills Trainers, Family Care Coordinators, and Mentors for high needs children and families.
 -Conduct protective services investigations.
 -Transfers in from Juvenile: \$41,200 Clinician Services and \$27,399 BJA Girls Community Partnership Grant
-
-

MEDICAL SERVICES

-Staffing: 4.0 FTE
 -Provide outpatient medical management services (psychiatric and medication evaluations).
 -Provide medical oversight of Patient Assistance Program and County Pay Medications.
 -Provide consultation to primary care health providers.
 -No County contribution to this program is estimated.
-
-

RESOURCE MANAGEMENT

-Provide authorization and utilization management of inpatient mental health services.
-Provide utilization management of ICTS (Intensive Children's Treatment Services) provided by Mental Health staff.
-No County contribution to this program is estimated.

Douglas County, Oregon
Health and Social Services Fund
Mental Health and Developmental Disabilities Programs

MANAGEMENT & CLINICAL SUPPORT SERVICES

.....Staffing: 21.00 FTE

.....Plan, develop and administer a cost-effective, consumer-centered mental health system.

.....Partner with Greater Oregon Behavioral Health, Inc. and Community Health Alliance to develop an integrated mental health services.

.....Monitor compliance to contractual obligations (Oregon Health Plan, grants, HIPAA etc.).

.....Improve access and design and utilization of collaborative documentation, electronic medical records and reports to improve services and meet compliance standards.

.....Provide reception coverage (phone and walk-in) and client appointment scheduling.

.....No County contribution to this program is estimated.

DEVELOPMENTAL DISABILITIES

.....Staffing: 14.00 FTE

.....Provide case management services to individuals with developmental disabilities.

.....Contract for residential and day program services to clients.

.....Conduct abuse investigations and provide protective services.

.....Facilitate meetings to determine eligibility and make referrals to the brokerage.

.....Provide quality assurance through developing and monitoring contracts with provider agencies.

.....No County contribution to this program.